

APP CRS 218°	Rwy Idg 4000
	TDZE 2565
	Apt Elev 2583

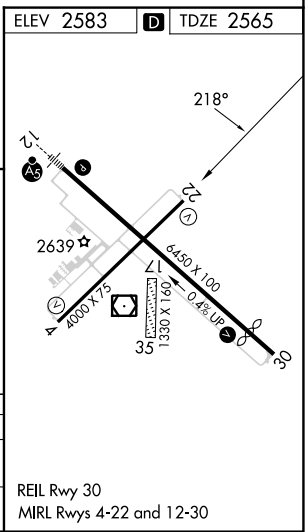
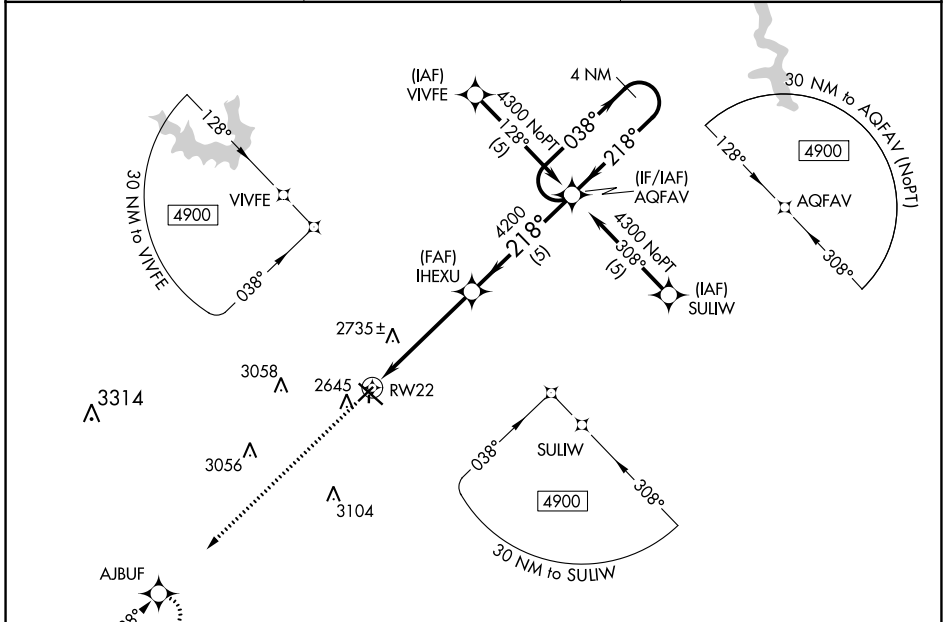
RNAV (GPS) RWY 22

MC COOK BEN NELSON RGNL (MCK)

RNP APCH-GPS.
 ▼ When local altimeter setting not received, use Imperial Muni altimeter setting and increase all MDA 220 feet, increase S-22 and Circling Cat C visibility 3/4 mile. VDP NA when using Imperial Muni altimeter setting. Circling NA to Rwy's 17 and 35.

MISSED APPROACH: Climb to 5000 via 218° course to AJBUF and hold.

ASOS 119.025	DENVER CENTER 132.7 226.675	UNICOM 122.8 (CTAF)
------------------------	---------------------------------------	-------------------------------



5000 ↑	AJBUF	VGSIs and descent angles not coincident (VGSi Angle 3.00/TCH 26).		
218° CRS	IHEXU	AQFAV	4 NM Holding Pattern	
	1.3 NM to RWY 22			
	3.7 NM	5 NM		
	1.3			

CATEGORY	A	B	C	D
RNAV MDA	3000-1	435 (500-1)	3000-1 1/4	NA
CIRCLING	3040-1	3120-1	3360-2 1/4	NA
	457 (500-1)	537 (600-1)	777 (800-2 1/4)	

REIL Rwy 30
 MIRL Rwy's 4-22 and 12-30

NC-2, 11 JUL 2024 to 08 AUG 2024

NC-2, 11 JUL 2024 to 08 AUG 2024