

WAAS CH <b>78417</b> <b>W21A</b>	APP CRS <b>218°</b>	Rwy Idg TDZE Apt Elev	<b>4314</b> <b>1449</b> <b>1470</b>
--	------------------------	-----------------------------	---

# RNAV (GPS) RWY 21

DEVILS LAKE RGNL (DVL)

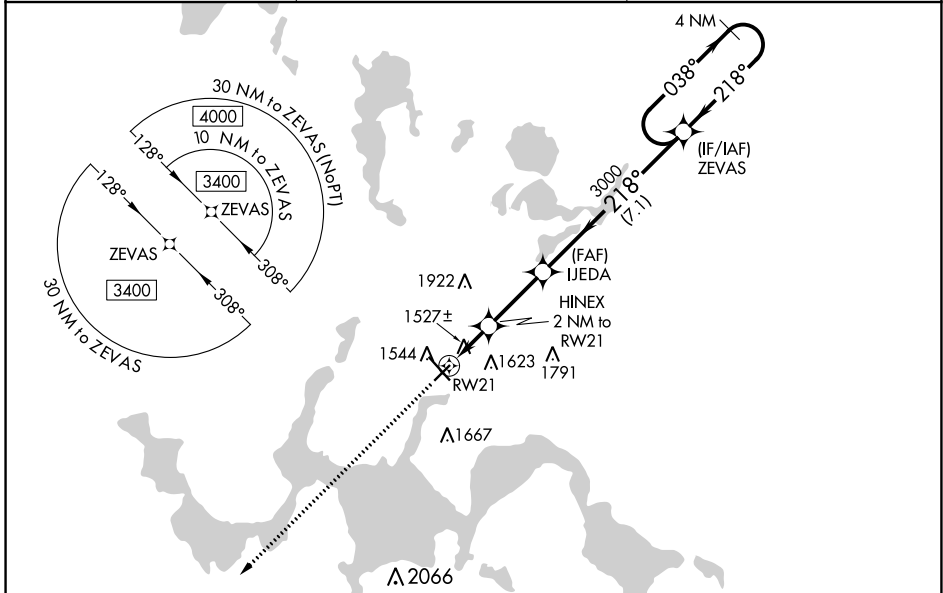
**⚠** For uncompensated Baro-VNAV systems, LNAV/VNAV NA below -17°C (2°F) or above 54°C (130°F). DME/DME RNP-0.3 NA. Helicopter visibility reduction below ¾ SM NA. Baro-VNAV NA when using Cando altimeter setting. VDP NA with Cando altimeter setting. When local altimeter setting not received, use Cando altimeter setting and increase all DA 63 feet, and all MDA 80 feet, increase LNAV and Circling Cats C and D visibility ¼ mile.

MISSED APPROACH: Climb to 3400 direct ZIKID and hold.

AWOS-3PT  
**125.875**

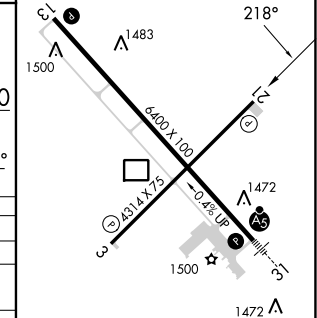
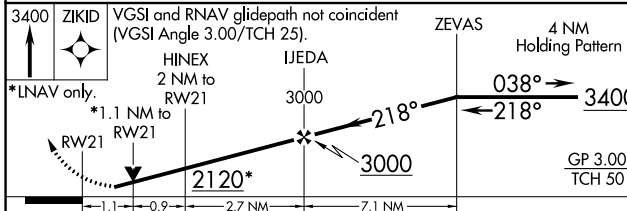
MINNEAPOLIS CENTER  
**124.2 270.3**

UNICOM  
**122.8 (CTAF) 0**



**3400** ZIKID VGSI and RNAV glidepath not coincident (VGSI Angle 3.00/TCH 25).  
 \*LNAV only. HINEX 2 NM to RW21. IJEDA 3000. ZEVAS 4 NM Holding Pattern.  
 RW21 2120\* 218° 038° 218° 3400  
 GP 3.00° TCH 50

ELEV 1470 **D** TDZE 1449



CATEGORY	A	B	C	D
LPV DA		1699-1	250 (300-1)	
LNAV/VNAV DA		1699-1	250 (300-1)	
LNAV MDA		1800-1	351 (400-1)	
<b>C</b> CIRCLING	2000-1	530 (600-1)	2240-2¼ 770 (800-2¼)	2240-2½ 770 (800-2½)

HIRL Rwy 13-31 **0**  
 REIL Rwy 3, 13 and 21 **0**  
 MIRL Rwy 3-21 **0**

NC-1, 11 JUL 2024 to 08 AUG 2024

NC-1, 11 JUL 2024 to 08 AUG 2024