

|                                        |                        |                                                     |             |
|----------------------------------------|------------------------|-----------------------------------------------------|-------------|
| WAAS<br>CH <b>93608</b><br><b>W03A</b> | APP CRS<br><b>038°</b> | Rwy Idg<br>TDZE <b>1450</b><br>Apt Elev <b>1470</b> | <b>4314</b> |
|----------------------------------------|------------------------|-----------------------------------------------------|-------------|

# RNAV (GPS) RWY 3

DEVILS LAKE RGNL (DVL)

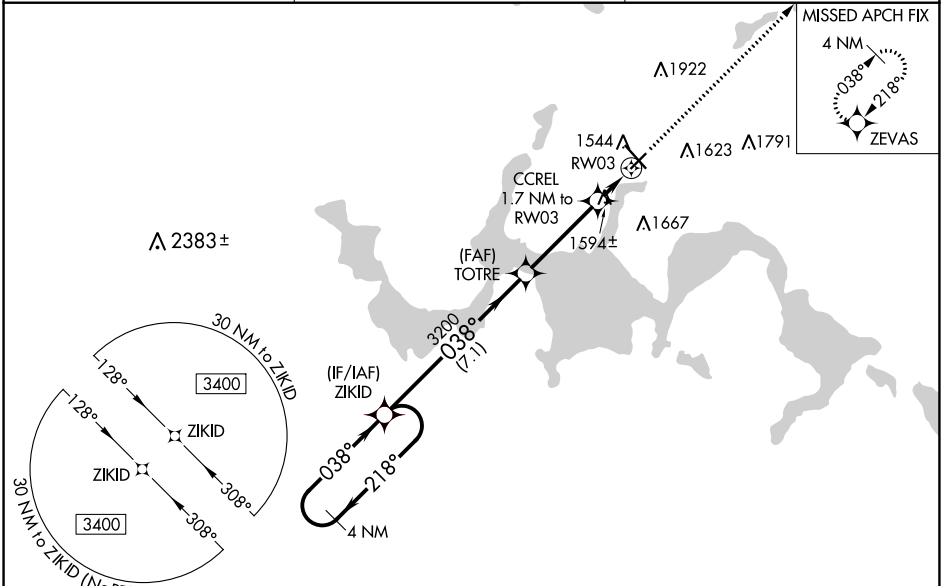
**⚠** For uncompensated Baro-VNAV systems, LNAV/VNAV NA below -17°C (2°F) or above 54°C (130°F). DME/DME RNP-0.3 NA. When local altimeter setting not received, use Cando altimeter setting and increase all DA 63 feet, and all MDA 80 feet, increase LNAV/VNAV all Cats visibility 1/8 mile, LNAV and Circling Cat C and D visibility 1/4 mile. Helicopter visibility reduction below 3/8 SM NA. Baro-VNAV NA when using Cando altimeter setting.

MISSED APPROACH: Climb to 3400 direct ZEVAS and hold.

AWOS-3PT  
**125.875**

MINNEAPOLIS CENTER  
**124.2 270.3**

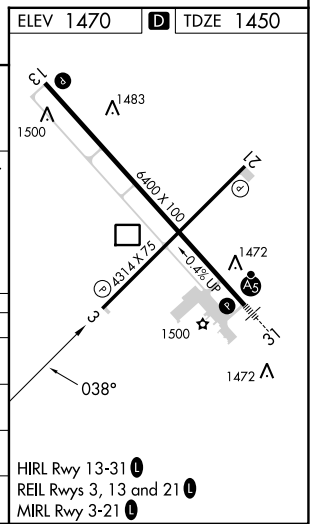
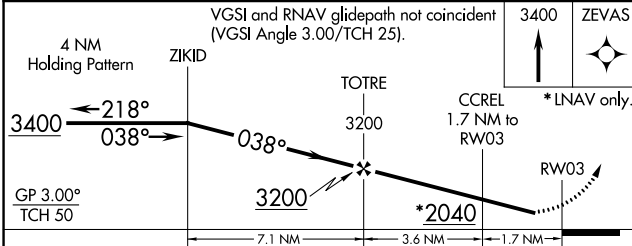
UNICOM  
**122.8 (CTAF)**



NC-1, 11 JUL 2024 to 08 AUG 2024

NC-1, 11 JUL 2024 to 08 AUG 2024

ELEV 1470 **D** TDZE 1450



| CATEGORY          | A                  | B | C                                                     | D |
|-------------------|--------------------|---|-------------------------------------------------------|---|
| LPV DA            | 1700-1             |   | 250 (300-1)                                           |   |
| LNAV/VNAV DA      | 1714-1             |   | 264 (300-1)                                           |   |
| LNAV MDA          | 1860-1 410 (400-1) |   | 1860-1 1/8 410 (400-1 1/8)                            |   |
| <b>C</b> CIRCLING | 2000-1 530 (600-1) |   | 2240-2 1/4 770 (800-2 1/4) 2240-2 1/2 770 (800-2 1/2) |   |

HIRL Rwy 13-31 **Ⓛ**  
REIL Rwys 3, 13 and 21 **Ⓛ**  
MIRL Rwy 3-21 **Ⓛ**