

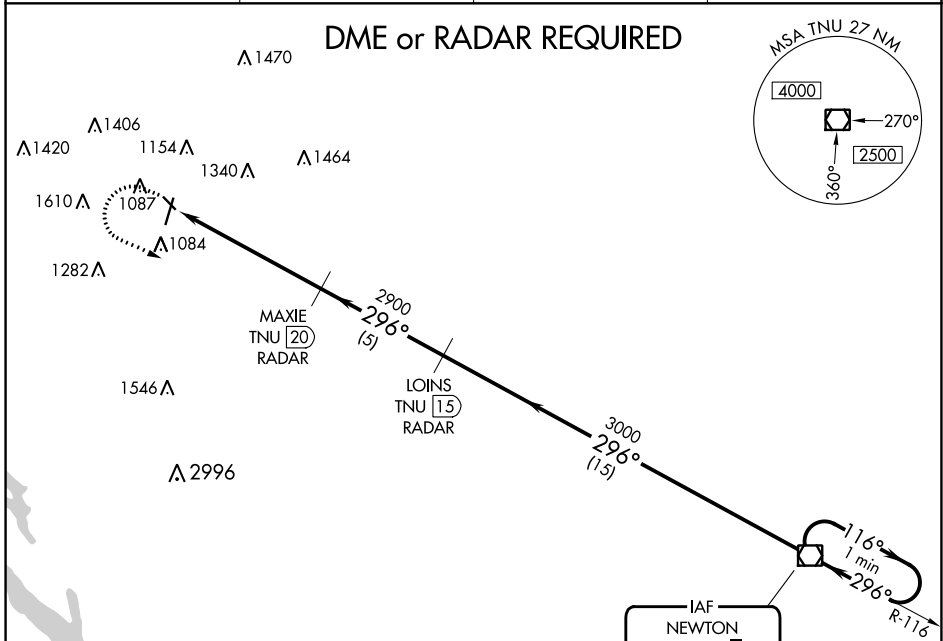
VOR/DME TNU 112.5 Chan 72	APP CRS 296°	Rwy Idg TDZE 930 Apt Elev 956
---	------------------------	---

VOR RWY 31

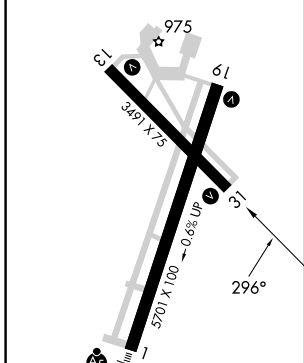
AMES MUNI (AMW)

-27°C Rwy 31 helicopter visibility reduction below 1 SM NA. Straight-in and Circling Rwy 31 NA at night.	MISSED APPROACH: Climb to 2000, then climbing left turn to 3000 direct TNU VOR/DME and hold.
--	--

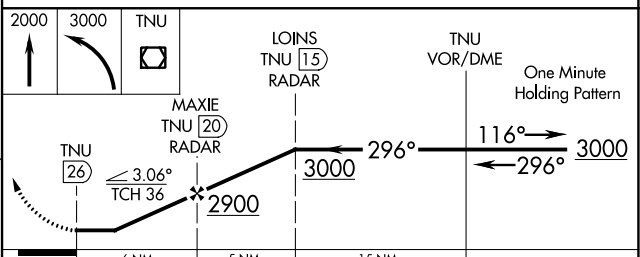
ASOS 132.025	DES MOINES APP CON 123.9 307.15	CLNC DEL 126.0	UNICOM 122.7 (CTAF)
------------------------	---	--------------------------	-------------------------------



ELEV 956	TDZE 930
----------	----------



NoPT for arrivals on TNU VOR/DME
airway radials 031 CW 081.



FAF to MAP 6 NM					
Knots	60	90	120	150	180
Min:Sec	6:00	4:00	3:00	2:24	2:00
CATEGORY	A	B	C	D	
S-31	1580-1	650 (700-1)	1580-1 7/8 650 (700-1 7/8)	NA	
CIRCLING	1580-1	624 (700-1)	1640-2 684 (700-2)	NA	