

LOC I-MVN <b>111.7</b>	APP CRS <b>231°</b>	Rwy Idg TDZE Apt Elev	<b>5572</b> <b>471</b> <b>480</b>
---------------------------	------------------------	-----------------------------	---

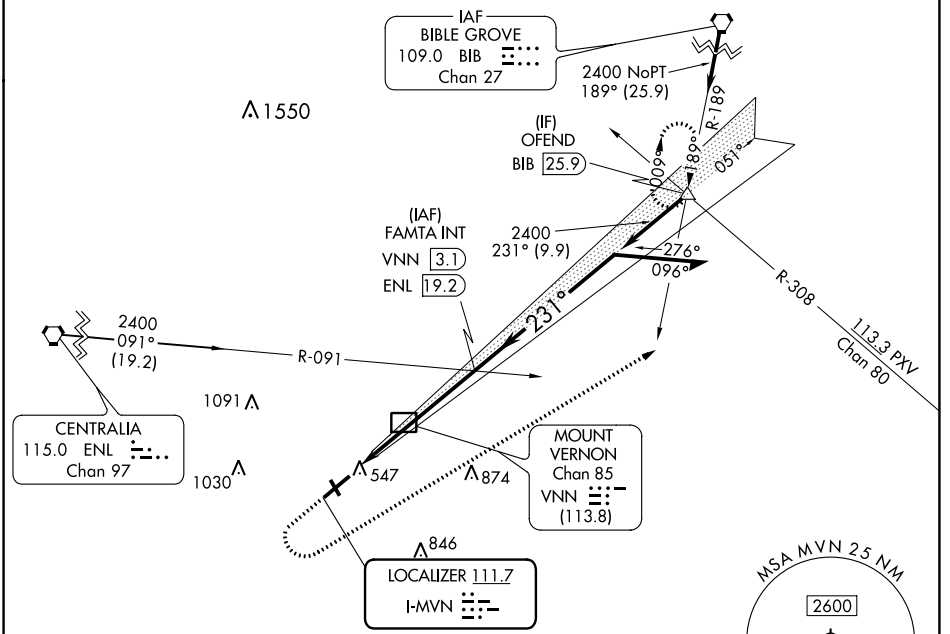
# ILS or LOC RWY 23

MOUNT VERNON (MVN)

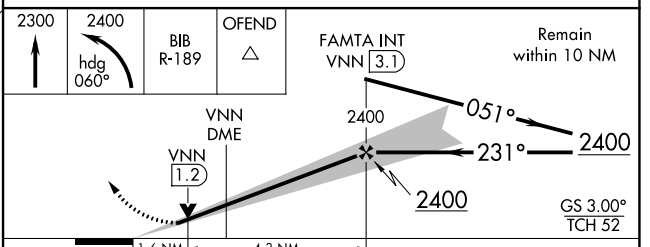
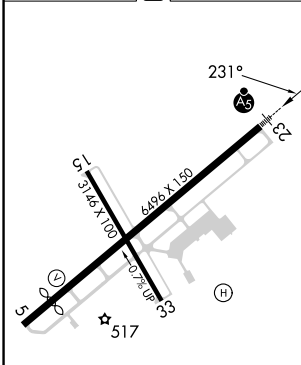
**⚠** Circling Rwy 15, 33 NA at night.

**MALSR** MISSED APPROACH: Climb to 2300 then climbing left turn to 2400 on heading 060° and on BIB VORTAC R-189 to OFEND and hold.

AWOS-3PT <b>118.2</b>	KANSAS CITY CENTER <b>127.7 351.825</b>	UNICOM <b>123.0 (CTAF) 0</b>
--------------------------	--	---------------------------------



ELEV 480	<b>D</b>	TDZE 471
----------	----------	----------



	FAF to MAP 5.9 NM				
Knots	60	90	120	150	180
Min:Sec	5:54	3:56	2:57	2:22	1:58
<b>C</b> CIRCLING	1020-1 540 (600-1)		1140-1 <sup>3</sup> / <sub>4</sub> 660 (700-1 <sup>3</sup> / <sub>4</sub> )		1380-3 900 (1000-3)

EC-3, 11 JUL 2024 to 08 AUG 2024

EC-3, 11 JUL 2024 to 08 AUG 2024