


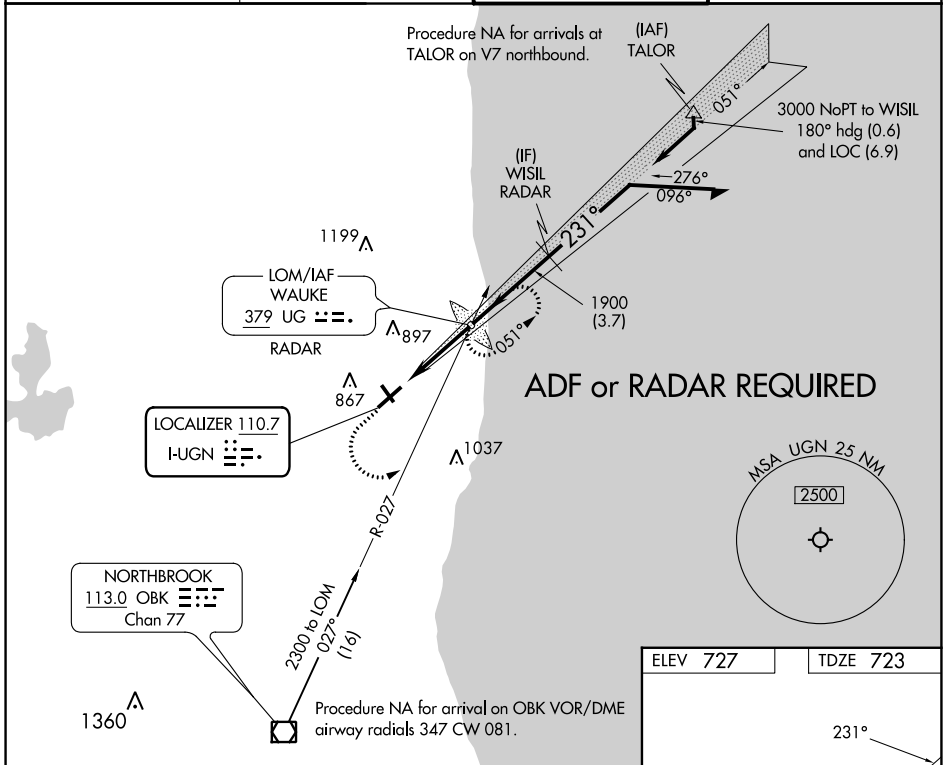
LOC I-UGN <b>110.7</b>	APP CRS <b>231°</b>	Rwy Idg TDZE Apt Elev	<b>6001</b> <b>723</b> <b>727</b>
---------------------------	------------------------	-----------------------------	---

# ILS or LOC RWY 23

WAUKEGAN NTL (UGN)




 Circling to Rwy 14, 32 NA at night. ADF or RADAR required.	 MALS R	MISSED APPROACH: Climb to 1600 then climbing left turn to 2300 to intercept OBK VOR/DME R-027 to WAUKE LOM/RADAR and hold.
--	--	--

ATIS <b>132.4</b>	CHICAGO APP CON <b>120.55</b>	WAUKEGAN TOWER ★ <b>120.05</b> (CTAF) <b>273.55</b>	GND CON <b>121.65</b>
----------------------	----------------------------------	--	--------------------------




**ADF or RADAR REQUIRED**

ELEV 727	TDZE 723
----------	----------

REIL Rwy 5   
 HIRL Rwy 5-23   
 MIRL Rwy 14-32 

FAF to MAP 3.4 NM					
Knots	60	90	120	150	180
Min:Sec	3:24	2:16	1:42	1:21	1:08

1600	2300	OBK R-027	UG	WAUKE LOM/RADAR	Remain within 10 NM
VGSi and ILS glidepath not coincident (VGSi Angle 3.00/TCH 52).					
CATEGORY	A	B	C	D	
S-ILS 23		923-1/2	200 (200-1/2)		
S-LOC 23		1040-1/2	317 (400-1/2)		
 CIRCLING	1220-1	493 (500-1)	1220-1 1/2	1400-2 1/4	673 (700-2 1/4)

EC-3, 11 JUL 2024 to 08 AUG 2024

EC-3, 11 JUL 2024 to 08 AUG 2024