

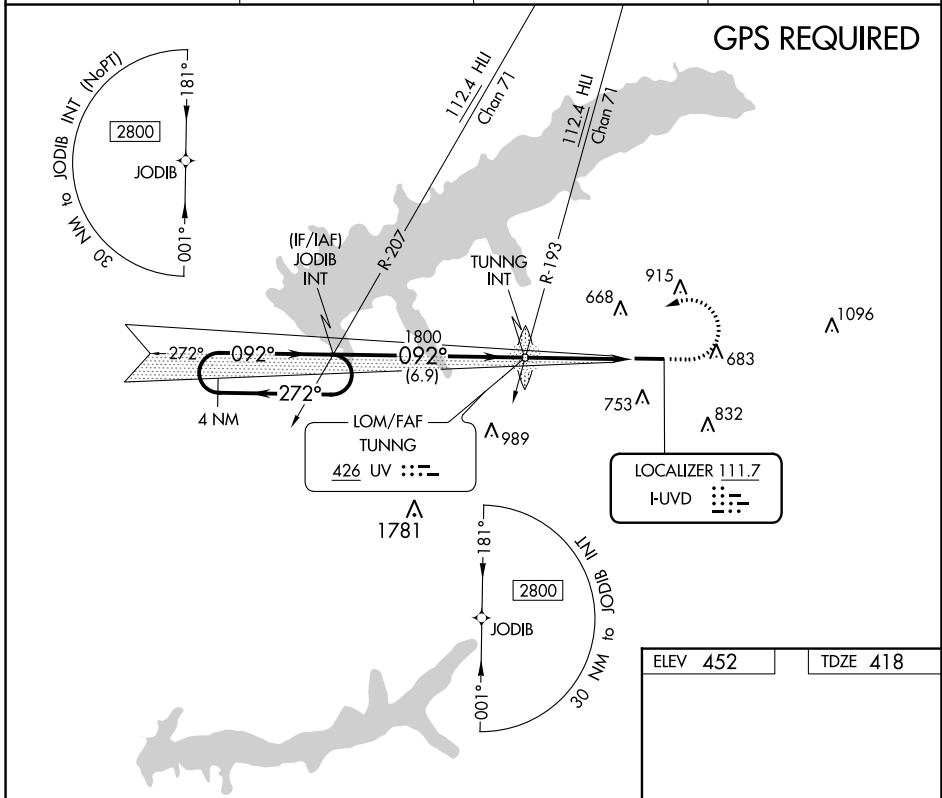
LOC I-UVD 111.7	APP CRS 092°	Rwy Idg TDZE Apt Elev 5600 418 452
---------------------------	------------------------	--

LOC Y RWY 9
UNIVERSITY-OXFORD (UOX)

GPS REQUIRED. When local altimeter setting not received, use Olive Branch altimeter setting and increase all MDA 100 feet; increase S-LOC Cats C, D visibility 3/8 mile, and Circling Cat C visibility 1/4 mile.

MISSED APPROACH: Climb to 1100 then climbing left turn to 2800 direct JODIB INT and hold.

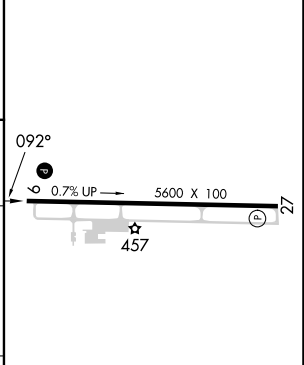
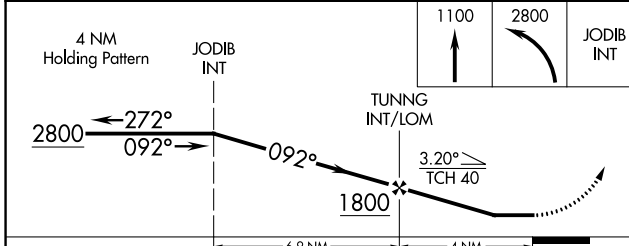
AWOS-3PT 132.725	MEMPHIS CENTER 128.5 279.55	GCO 135.075	UNICOM 123.0 (CTAF)
----------------------------	---------------------------------------	-----------------------	-------------------------------



SC-4, 11 JUL 2024 to 08 AUG 2024

SC-4, 11 JUL 2024 to 08 AUG 2024

ELEV 452	TDZE 418
----------	----------



CATEGORY	A	B	C	D
S-LOC 9	920-1	502 (500-1)	920-1 3/8	502 (500-1 3/8)
C CIRCLING	980-1 528 (600-1)	1060-1 608 (700-1)	1380-2 3/4 928 (1000-2 3/4)	1380-3 928 (1000-3)

MIRL Rwy 9-27 **0**
REIL Rwys 9 and 27 **0**

FAF to MAP 4 NM

Knots	60	90	120	150	180
Min:Sec	4:00	2:40	2:00	1:36	1:20