

VOR/DME MAZ 110.6 Chan 43	APP CRS 081°	Rwy Idg 4699 TDZE 28 Apt Elev 28
-----------------------------------------------	------------------------	-------------------------------------------------------------

VOR RWY 9

EUGENIO MARIA DE HOSTOS (MAZ)(TJMZ)

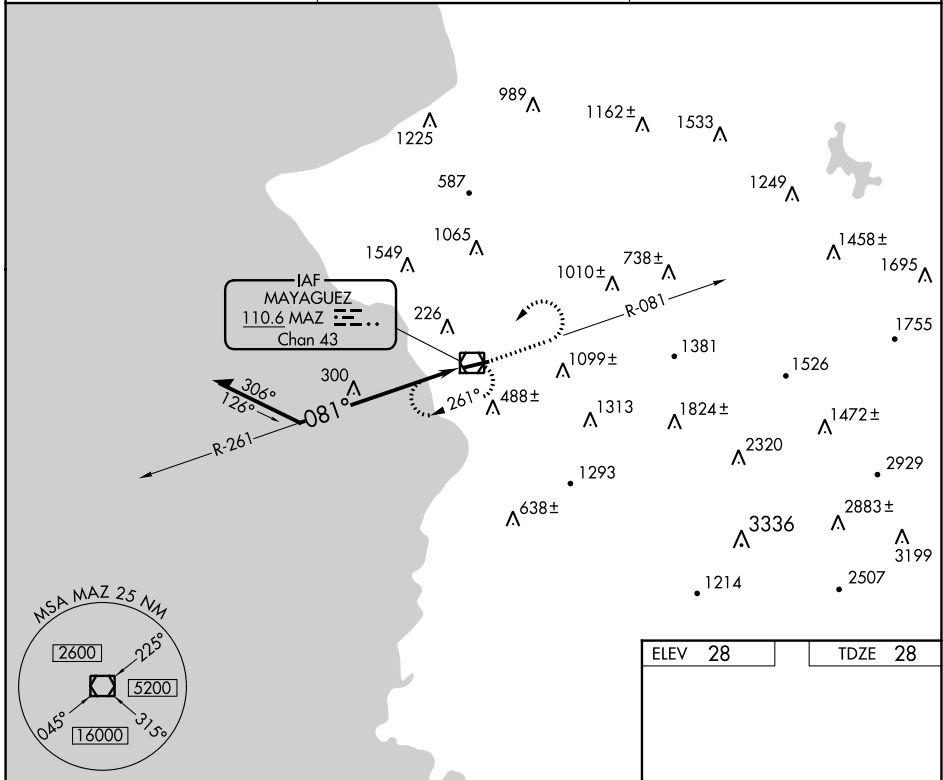
⚠ Circling to Rwy 27 NA at night. When VGSI inoperative, procedure NA at night. Visibility reduction by helicopters NA. When Class E surface area not in effect, except for operators with approved weather reporting service, procedure NA.

MISSED APPROACH: Climb to 2000 on MAZ VOR/DME R-081 then climbing left turn to 5000 direct MAZ VOR/DME and hold, continue climb-in-hold to 5000.

SAN JUAN CENTER
118.75 269.0

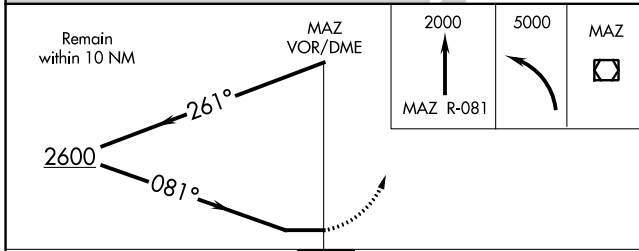
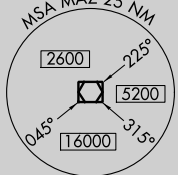
CLNC DEL
121.7

UNICOM
122.8 (CTAF) 0

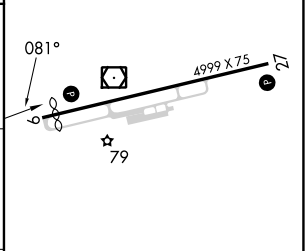


SE-3, 11 JUL 2024 to 08 AUG 2024

SE-3, 11 JUL 2024 to 08 AUG 2024



ELEV 28	TDZE 28
---------	---------



CATEGORY	A	B	C	D
S-9	1100-1¼ 1072 (1100-1¼)	1100-1½ 1072 (1100-1½)	1100-3 1072 (1100-3)	NA
CIRCLING	1100-1¼ 1072 (1100-1¼)	1100-1½ 1072 (1100-1½)	1460-3 1432 (1500-3)	NA

REIL Rwy 9 0
MIRL Rwy 9-27