

WAAS CH <b>40104</b> <b>W16A</b>	APP CRS <b>169°</b>	Rwy Idg <b>4797</b> TDZE <b>1319</b> Apt Elev <b>1319</b>
--	------------------------	---

# RNAV (GPS) RWY 16

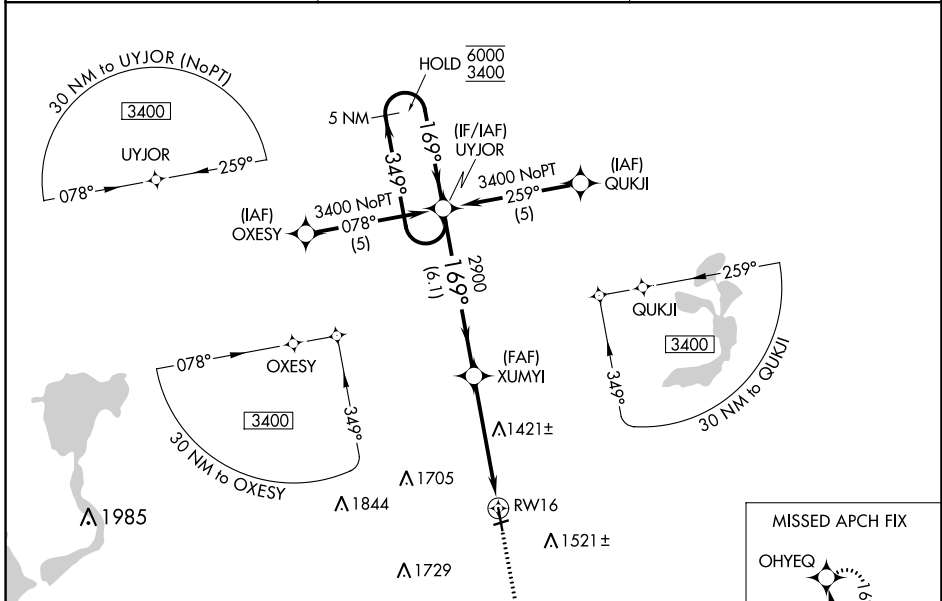
ESTHERVILLE MUNI (EST)

RNP APCH.

**⚠** Circling NA to Rwy 6 and 24. Baro-VNAV and VDP NA when using Jackson altimeter setting. For uncompensated Baro-VNAV systems, LNAV/VNAV NA below -17°C or above 54°C. When local altimeter setting not received, use Jackson altimeter setting and increase all DA/MDA 60 feet.

MISSED APPROACH: Climb to 3400 direct OHYEQ and hold.

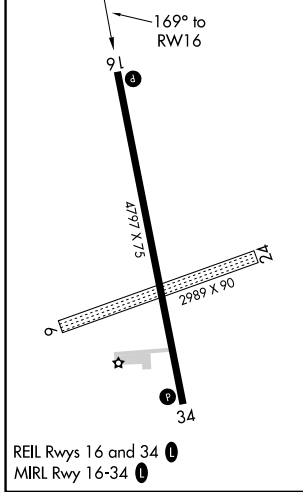
ASOS <b>121.425</b>	MINNEAPOLIS CENTER <b>127.75 257.7</b>	UNICOM <b>122.975 (CTAF) 0</b>
------------------------	---	-----------------------------------



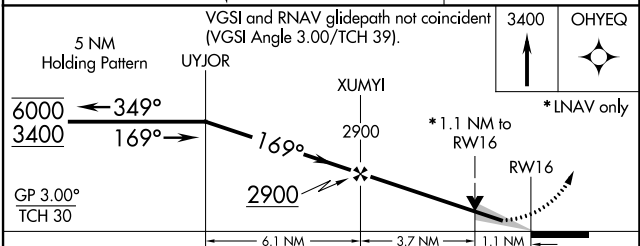
NC-3, 11 JUL 2024 to 08 AUG 2024

NC-3, 11 JUL 2024 to 08 AUG 2024

ELEV 1319	TDZE 1319
-----------	-----------



REIL Rwy 16 and 34 **0**  
MIRL Rwy 16-34 **0**



CATEGORY	A	B	C	D
LPV DA	1569-1	250 (300-1)		NA
LNAV/VNAV DA	1608-1	289 (300-1)		NA
LNAV MDA	1720-1	401 (500-1)		NA
<b>C</b> CIRCLING	1720-1 401 (500-1)	1840-1 521 (600-1)		NA