

APP CRS	Rwy Idg	<b>6492</b>
<b>292°</b>	TDZE	<b>23</b>
	Apt Elev	<b>23</b>

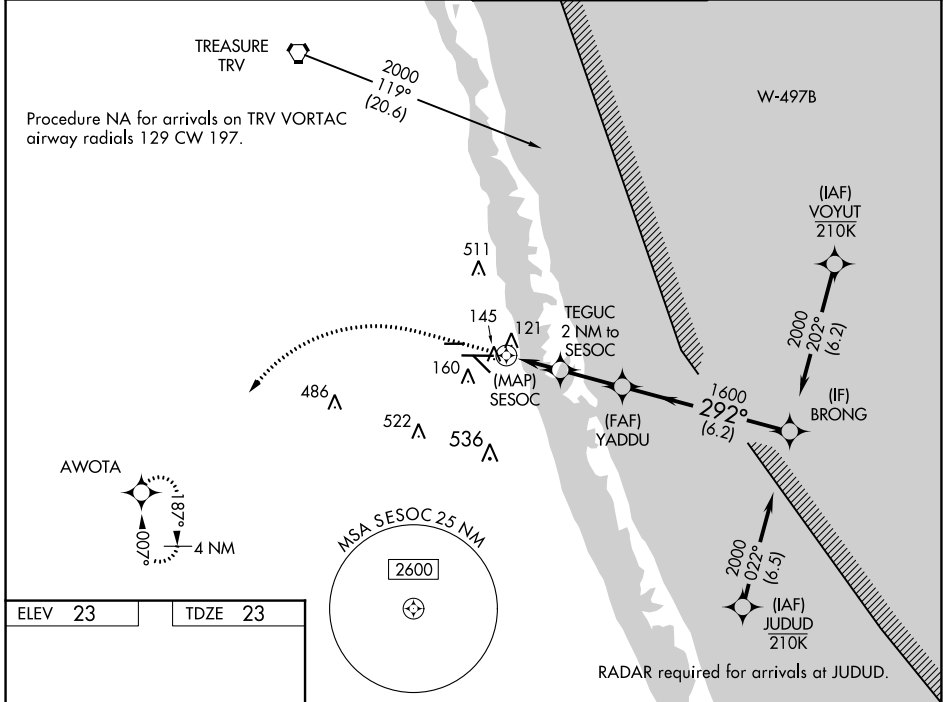
# RNAV (GPS) RWY 28L

TREASURE COAST INTL (FPR)

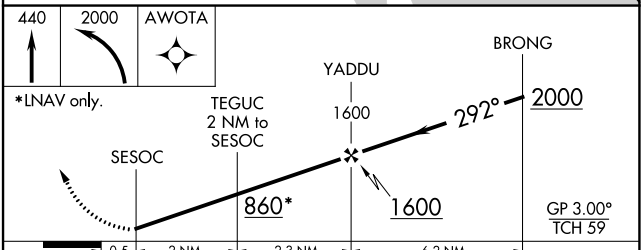
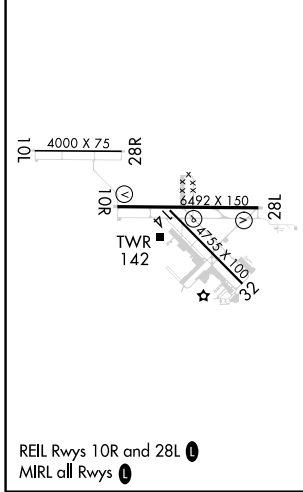
**⚠** Helicopter visibility reduction below  $\frac{3}{4}$  SM NA. For uncompensated Baro-VNAV systems, LNAV/VNAV NA below -15°C (5°F) or above 43°C (109°F). DME/DME RNP-0.3 NA. When local altimeter setting not received, use Vero Beach altimeter setting and increase LNAV/VNAV DA to 435 feet and MDA 40 feet; increase LNAV/VNAV visibility all Cats and LNAV visibility Cats C/D  $\frac{1}{8}$  SM. Increase Circling visibility Cat C/D  $\frac{1}{4}$  SM. Baro-VNAV NA when using local altimeter setting.

**⚠** MISSED APPROACH: Climb to 440 then climbing left turn to 2000 direct AWOTA and hold.

ATIS <b>134,825</b>	PALM BEACH APP CON <b>132.8</b>	FORT PIERCE TOWER ★ <b>128.2 (CTAF) 0</b>	GND CON (GCO) <b>119,55</b>
------------------------	------------------------------------	--	--------------------------------



ELEV 23	TDZE 23
---------	---------



CATEGORY	A	B	C	D
LNAV/VNAV DA		412-1 $\frac{1}{4}$	389 (400-1 $\frac{1}{4}$ )	
LNAV MDA		400-1	377 (400-1)	
<b>C</b> CIRCLING	460-1 437 (500-1)	480-1 457 (500-1)	880-2 $\frac{1}{2}$ 857 (900-2 $\frac{1}{2}$ )	880-2 $\frac{3}{4}$ 857 (900-2 $\frac{3}{4}$ )

SE-3, 11 JUL 2024 to 08 AUG 2024

SE-3, 11 JUL 2024 to 08 AUG 2024