

WAAS CH 99729 W32A	APP CRS 323°	Rwy ldg 4755 TDZE 23 Apt Elev 23
--	------------------------	---

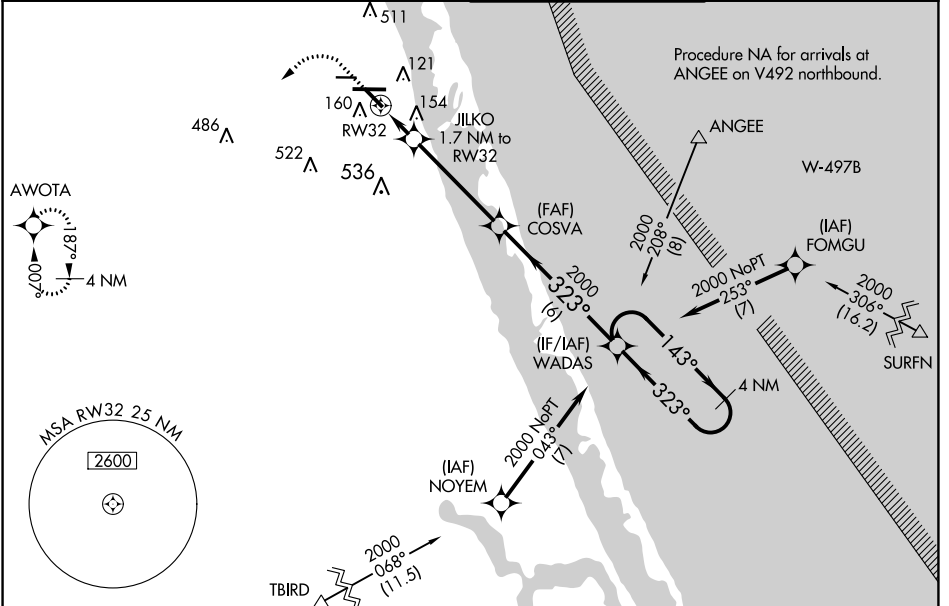
RNAV (GPS) RWY 32

TREASURE COAST INTL (FPR)

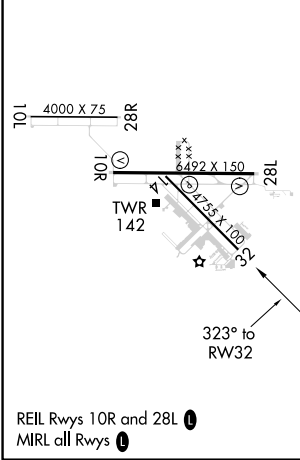
⚠ For uncompensated Baro-VNAV systems, LNAV/VNAV NA below -15C (5°F) or above 43°C (109°F). DME/DME RNP-0.3 NA. When local altimeter setting not received, use Vero Beach altimeter setting and increase LPV DA to 325, LNAV/VNAV DA to 329 feet and MDA 40 feet; increase LPV all Cats, LNAV/VNAV all Cats, and LNAV Cats C/D visibility ¼ SM. Increase Circling visibility Cat C/D ¼ SM. Baro-VNAV NA when using Vero Beach altimeter setting.

⚠ MISSED APPROACH: Climb to 520 then climbing left turn to 2000 direct AWOTA and hold.

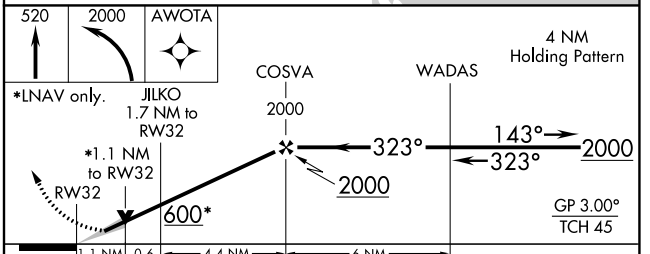
ATIS 134.825	PALM BEACH APP CON 132.8	FORT PIERCE TOWER* 128.2 (CTAF)	GND CON (GCO) 119.55
------------------------	------------------------------------	---	--------------------------------



ELEV 23	TDZE 23
---------	---------



Procedure NA for arrivals at TBIRD on V159 southbound and V531 northeast bound.



CATEGORY	A	B	C	D
LPV DA		302- ⁷ / ₈	279 (300- ⁷ / ₈)	
LNAV/VNAV DA		306- ⁷ / ₈	283 (300- ⁷ / ₈)	
LNAV MDA	420-1	397 (400-1)	420-1 ¹ / ₈	397 (400-1 ¹ / ₈)
C CIRCLING	460-1 437 (500-1)	480-1 457 (500-1)	880-2 ¹ / ₂ 857 (900-2 ¹ / ₂)	880-2 ³ / ₄ 857 (900-2 ³ / ₄)

SE-3, 11 JUL 2024 to 08 AUG 2024

SE-3, 11 JUL 2024 to 08 AUG 2024