

(FLMGO2.FLMGO) 24137

AL-5349 (FAA)

MIAMI EXEC (TMB)
MIAMI, FLORIDA

FLMGO TWO DEPARTURE(RNAV)

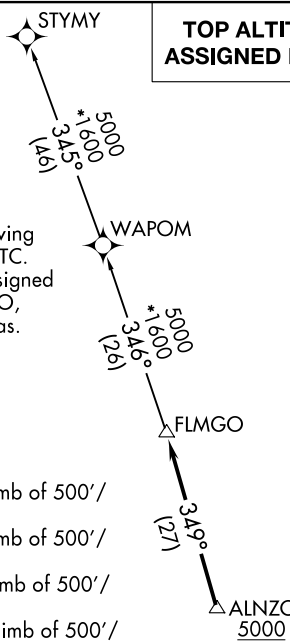
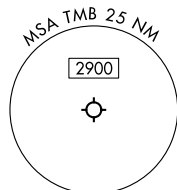
RNAV 1 - DME/DME/IRU or GPS.

RADAR required.

**TOP ALTITUDE:
ASSIGNED BY ATC**

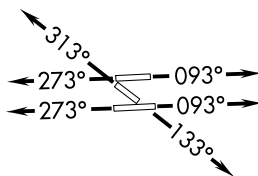
MIAMI DEP CON
125.5 354.1
ATIS
124.0
CLNC DEL
133.0
GND CON
121.7
MIAMI EXEC TOWER★
118.9 (CTAF)

- NOTE: Jet aircraft only.
- NOTE: Accelerate to 250K until leaving 10000, if unable, advise ATC.
- NOTE: WAPOM Transition ATC assigned except aircraft landing: MCO, DAB, and MLB terminal areas.



TAKEOFF MINIMUMS

- Rwy 9L: Standard with minimum climb of 500'/NM to 1300.
- Rwy 9R: Standard with minimum climb of 500'/NM to 1500.
- Rwy 13: Standard with minimum climb of 500'/NM to 1800.
- Rwy 27L: Standard with minimum climb of 500'/NM to 1900.
- Rwy 27R: Standard with minimum climb of 500'/NM to 1700.
- Rwy 31: Standard with minimum climb of 500'/NM to 1400.



NOTE: Chart not to scale.

DEPARTURE ROUTE DESCRIPTION

- TAKEOFF RUNWAYS 9L/R: Climb on heading 093° or as assigned by ATC for RADAR vectors to cross ALNZO at or above 5000, thence. . . .
- TAKEOFF RUNWAY 13: Climb on heading 133° or as assigned by ATC for RADAR vectors to cross ALNZO at or above 5000, thence. . . .
- TAKEOFF RUNWAYS 27L/R: Climb on heading 273° or as assigned by ATC for RADAR vectors to cross ALNZO at or above 5000, thence. . . .
- TAKEOFF RUNWAY 31: Climb on heading 313° or as assigned by ATC for RADAR vectors to cross ALNZO at or above 5000, thence. . . .

. . . on track 349° to FLMGO, then on assigned transition. Maintain ATC assigned altitude. Expect filed altitude within 10 minutes after departure.

- STYMY TRANSITION (FLMGO2.STYMY)
- WAPOM TRANSITION (FLMGO2.WAPOM)

FLMGO TWO DEPARTURE(RNAV)
(FLMGO2.FLMGO) 21MAR24

MIAMI, FLORIDA
MIAMI EXEC (TMB)

SE-3, 11 JUL 2024 to 08 AUG 2024

SE-3, 11 JUL 2024 to 08 AUG 2024