

MAYNR TWO DEPARTURE (RNAV)

SE-3, 11 JUL 2024 to 08 AUG 2024

MIAMI DEP CON
125.5 354.1
ATIS
124.0
CLNC DEL
133.0
GND CON
121.7
MIAMI EXEC TOWER *
118.9 (CTAF)

RNAV1 - DME/DME/IRU or GPS.
From SUIPT to MAXIM: RNAV 1 - GPS.
From SUIPT to CANOA: RNAV 1 - GPS.
RADAR required.

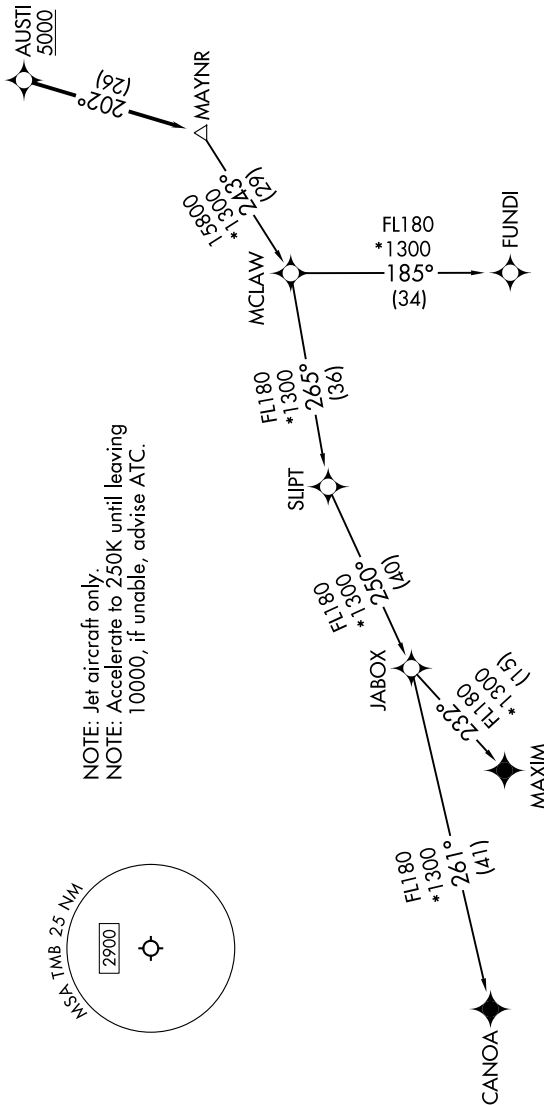
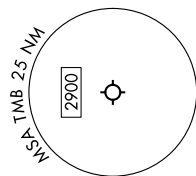
**TOP ALTITUDE:
ASSIGNED BY ATC**



TAKEOFF MINIMUMS

- Rwy 9L: Standard with minimum climb of 500'/NM to 1300.
- Rwy 9R: Standard with minimum climb of 500'/NM to 1500.
- Rwy 13: Standard with minimum climb of 500'/NM to 1800.
- Rwy 27L: Standard with minimum climb of 500'/NM to 1900.
- Rwy 27R: Standard with minimum climb of 500'/NM to 1700.
- Rwy 31: Standard with minimum climb of 500'/NM to 1400.

NOTE: Jet aircraft only.
NOTE: Accelerate to 250K until leaving
10000, if unable, advise ATC.



NOTE: Chart not to scale.

(CONTINUED ON FOLLOWING PAGE)

SE-3, 11 JUL 2024 to 08 AUG 2024

MAYNR TWO DEPARTURE (RNAV)