

LOC/DME I- <u>UZA</u>	APP CRS	Rwy ldg	5500
<u>108.5</u>	<u>016°</u>	TDZE	666
Chan <u>22</u>		Apt Elev	666

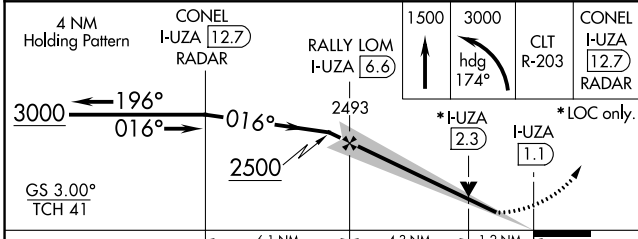
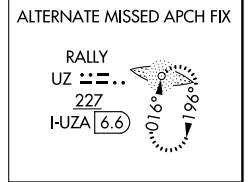
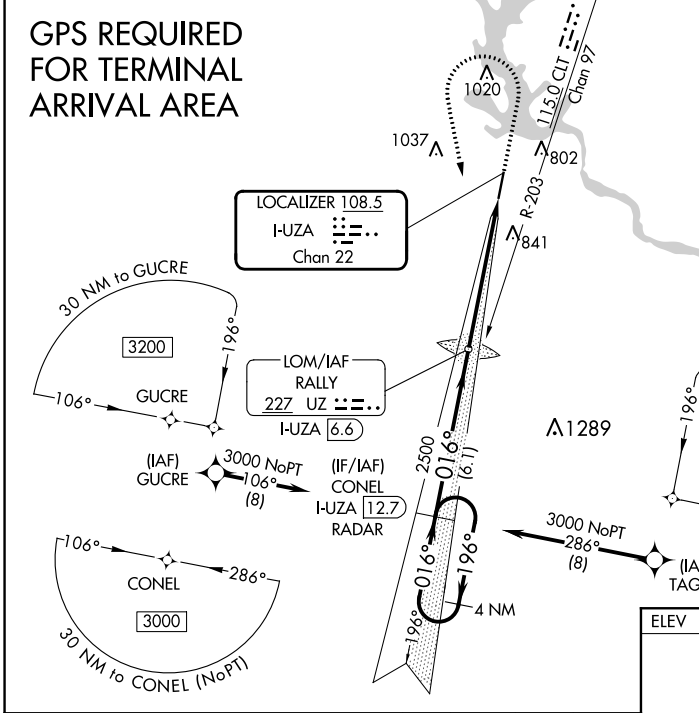
# ILS Y or LOC Y RWY 2

ROCK HILL/YORK COUNTY/BRYANT FLD (UZA)

**⚠** ADF or DME required. VDP NA with Charlotte/Douglas Intl altimeter setting. When local altimeter setting not received, use Charlotte/Douglas Intl altimeter setting and increase all DA 45 feet and all MDA 60 feet. Increase S-LOC 2 Cat C/D visibility ¼ mile. For inop MALSR, increase S-LOC 2 Cat C/D visibility to 1½ mile. For inop MALSR, when using Charlotte/Douglas Intl altimeter setting, increase S-LOC 2 Cat C/D visibility to 1½ mile.

**MALS**  
 MALSR  
**MISSED APPROACH:** Climb to 1500 then climbing left turn to 3000 on heading 174° and CLT VOR/DME R-203 to CONEL/I-UZA 12.7 DME/RADAR and hold.

ASOS <b>120.775</b>	CHARLOTTE APP CON <b>120.05 307.8</b>	GCO <b>121.725</b>	UNICOM <b>123.05 (CTAF) 0</b>
------------------------	--	-----------------------	----------------------------------



ELEV 666	TDZE 666
<p>MIRL Rwy 2-20 0</p>	
FAF to MAP 5.5 NM	
Knots	60 90 120 150 180
Min:Sec	5:30 3:40 2:45 2:12 1:50

CATEGORY	A	B	C	D
S-ILS 2	866-½		200 (200-½)	
S-LOC 2	1080-½	414 (500-½)	1080-¾	414 (500-¾)
<b>C</b> CIRCLING	1140-1 474 (500-1)	1160-1 494 (500-1)	1340-2 674 (700-2)	1340-2¼ 674 (700-2¼)

SE-2, 11 JUL 2024 to 08 AUG 2024

SE-2, 11 JUL 2024 to 08 AUG 2024