

(KRITR6.KRITR) 24081

# KRITR SIX DEPARTURE (RNAV)

ROCK HILL/YORK COUNTY/BRYANT FLD (UZA)  
AL-5361 (FAA) ROCK HILL, SOUTH CAROLINA

CHARLOTTE DEP CON  
120.05 307.8  
ASOS  
120.775  
UNICOM  
123.05 (CTAF)

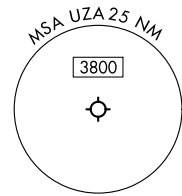
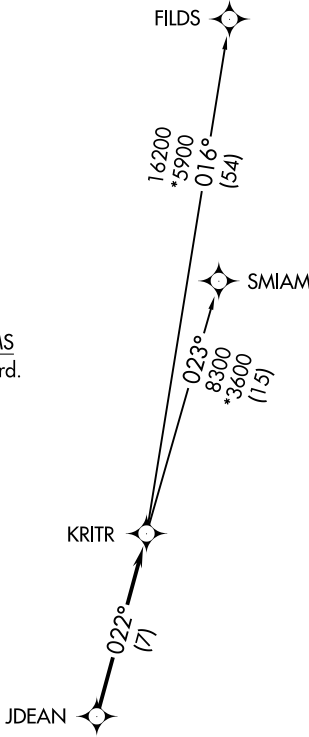
**TOP ALTITUDE:  
3000**

RNAV 1 - DME/DME/IRU or GPS.

RADAR required.

TAKEOFF MINIMUMS

Rwys 2, 20: Standard.



- NOTE: For turbo jets only.
- NOTE: Transponder code will be issued via PDC or Charlotte CLNC DEL.
- NOTE: If unable to accept climb rates, advise ATC on initial contact.
- NOTE: Upon reaching 10000 MSL, accelerate to and maintain 280K, if unable advise ATC.

NOTE: Chart not to scale.



## DEPARTURE ROUTE DESCRIPTION

Climb on heading assigned by ATC, on RADAR vectors to JDEAN, then on track 022° to KRITR, then on assigned transition. Maintain 3000, expect filed altitude within 10 minutes after departure.

FILDS TRANSITION (KRITR6.FILDS)

SMIAM TRANSITION (KRITR6.SMIAM)

# KRITR SIX DEPARTURE (RNAV)

(KRITR6.KRITR) 21MAR24

ROCK HILL, SOUTH CAROLINA  
ROCK HILL/YORK COUNTY/BRYANT FLD (UZA)

SE-2, 11 JUL 2024 to 08 AUG 2024

SE-2, 11 JUL 2024 to 08 AUG 2024