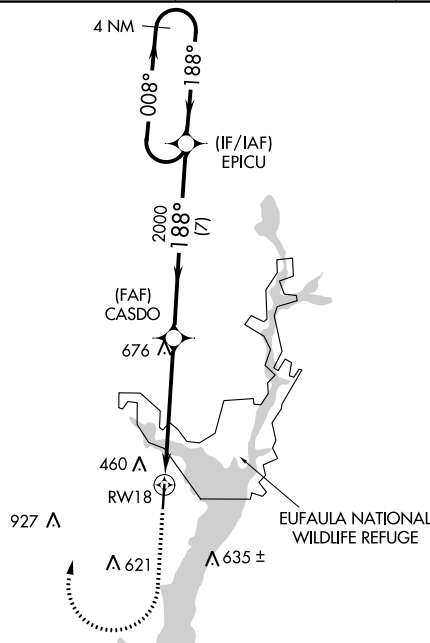
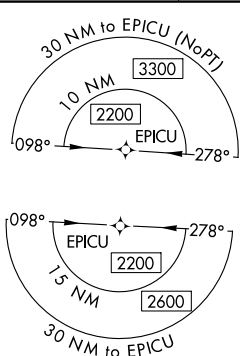


WAAS CH <b>86723</b> <b>W18A</b>	APP CRS <b>188°</b>	Rwy Idg TDZE Apt Elev	<b>5000</b> <b>285</b> <b>285</b>
----------------------------------------	------------------------	-----------------------------	-----------------------------------------

# RNAV (GPS) RWY 18

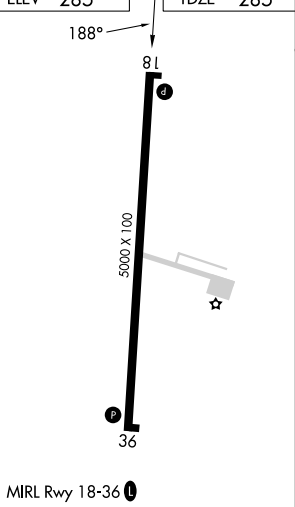
WEEDON FLD (EUF)

RNP APCH - GPS.			MISSED APPROACH: Climb to 1300 then climbing right turn to 2200 direct EPICU and hold.
ASOS <b>128.325</b>	ATLANTA APP CON * <b>125.5 323.1</b>	CLNC DEL <b>134.25 339.8</b>	UNICOM <b>122.8</b> (CTAF) <b>0</b>

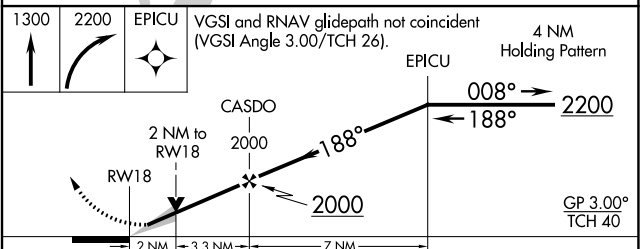


▲ 1010

ELEV 285	TDZE 285
----------	----------



EUFALA, ALABAMA  
Amdt 1E 13JUL23



CATEGORY	A	B	C	D
LPV DA	599-1		314 (400-1)	
LNAV/VNAV DA	706-1¼		421 (500-1¼)	
LNAV MDA	940-1	655 (700-1)	940-1⅞	655 (700-1⅞)
CIRCLING	940-1	655 (700-1)	1060-2¼ 775 (800-2¼)	1060-2½ 775 (800-2½)

SE-4, 11 JUL 2024 to 08 AUG 2024

SE-4, 11 JUL 2024 to 08 AUG 2024