

WAAS CH 58101 W34A	APP CRS 339°	Rwy Idg TDZE 1258 Apt Elev 1278	5002
----------------------------------------	------------------------	-----------------------------------------------------	-------------

RNAV (GPS) RWY 34

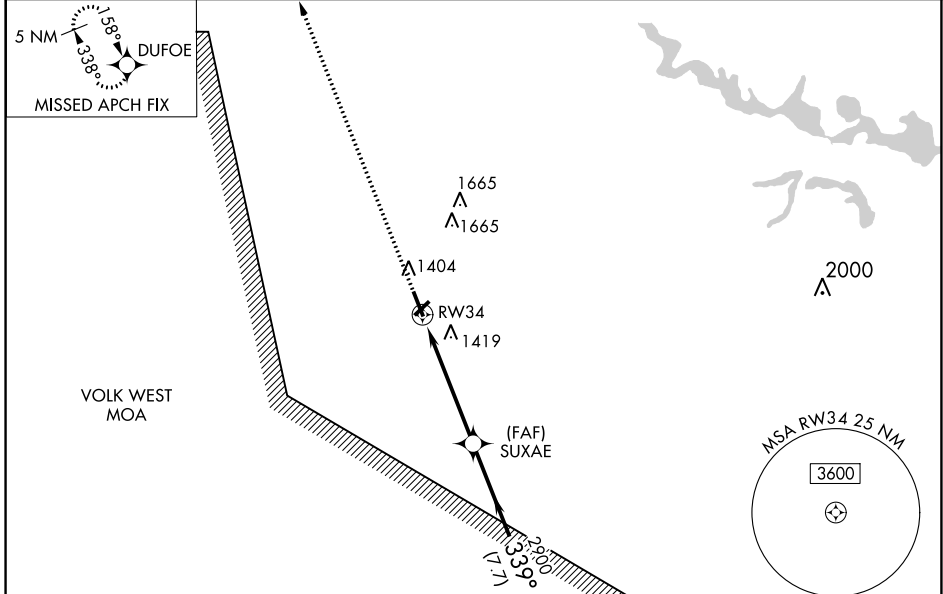
MARSHFIELD MUNI (MFI)

For inoperative MALSR increase LPV all Cats visibility to 1, increase LNAV Cats A and B to 1 and Cat D to 1¼. If local altimeter setting not received, use Central Wisconsin altimeter setting and increase all DAs/MDAs 60 feet. VDP and Baro-VNAV NA when using Central Wisconsin altimeter setting. For uncompensated Baro-VNAV systems, LNAV/VNAV NA below -17° C (2° F) or above 46° C (115° F). DME/DME RNP-0.3 NA.

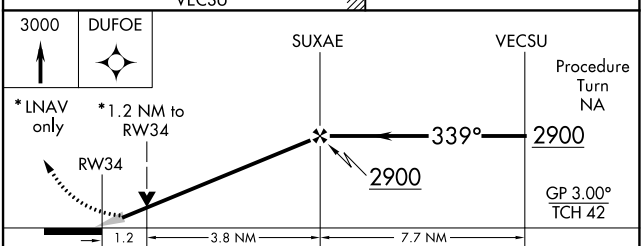
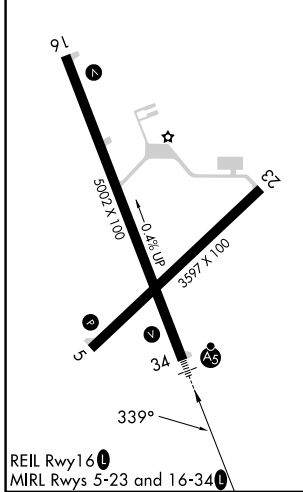


MISSED APPROACH: Climb to 3000 direct DUFOE and hold.

ASOS 121.575	MINNEAPOLIS CENTER 124.4 317.7	UNICOM 123.0 (CTAF)
------------------------	------------------------------------------	-------------------------------



ELEV 1278	TDZE 1258
-----------	-----------



CATEGORY	A	B	C	D
LPV DA	1508-¾		250 (300-¾)	
LNAV/VNAV DA	1718-1¼		460 (500-1¼)	
LNAV MDA	1680-¾		422 (500-¾)	
			1680-1 422 (500-1)	
CIRCLING	1760-1¾		2020-2½	
	482 (500-1¾)		742 (800-2½)	
			2020-2½ 742 (800-2½)	

EC-3, 11 JUL 2024 to 08 AUG 2024

EC-3, 11 JUL 2024 to 08 AUG 2024