

WAAS CH 69630 W05A	APP CRS 050°	Rwy Idg TDZE Apt Elev	5005 3427 3443
--	------------------------	-----------------------------	---

RNAV (GPS) RWY 5

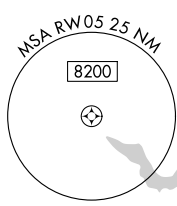
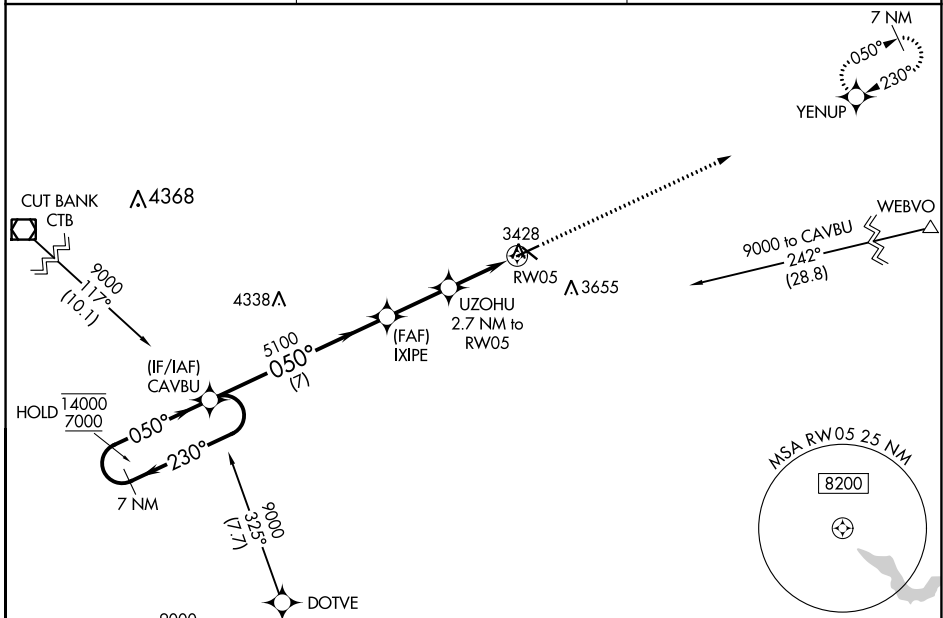
SHELBY (SBX)

RNP APCH - GPS.

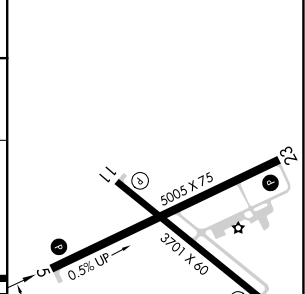
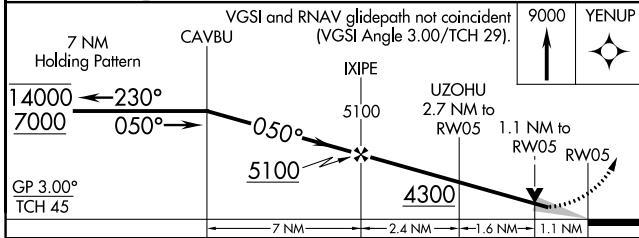
⚠ Baro-VNAV and VDP NA when using Cut Bank altimeter setting. For uncompensated Baro-VNAV systems, LNAV/VNAV NA below -21°C or above 54°C. When local altimeter setting not received, use Cut Bank altimeter setting.

⚠ MISSED APPROACH: Climb to 9000 direct YENUP and hold, continue climb-in-hold to 9000.

AWOS-3PT 128.325	SALT LAKE CITY CENTER 133.4 285.4	UNICOM 122.8 (CTAF) 0
----------------------------	---	---------------------------------



ELEV 3443	TDZE 3427
-----------	-----------



CATEGORY	A	B	C	D
LPV DA		3733-1	306 (300-1)	
LNAV/VNAV DA		3783-1	356 (400-1)	
LNAV MDA		3800-1	373 (400-1)	
C CIRCLING	4020-1 577 (600-1)	4080-1 637 (700-1)	4100-1¾ 657 (700-1¾)	4220-2½ 777 (800-2½)

MIRL Rwy 5-23 and 11-29 0

NW-1, 11 JUL 2024 to 08 AUG 2024

NW-1, 11 JUL 2024 to 08 AUG 2024