

LOC I-GLR 111.1	APP CRS 096°	Rwy ldg 6579 TDZE 1321 Apt Elev 1328
---------------------------	------------------------	---

ILS or LOC RWY 9
GAYLORD RGNL (G.L.R.)

NA When local altimeter setting not received, use Grayling altimeter setting and increase all DA 71 feet and all MDA 80 feet; increase S-LOC 9 and Circling Cat C/D visibility ¼ mile. For inop MALSRS when using Grayling altimeter setting, increase S-ILS all Cats visibility to ¾ mile. Night landing: Rwy 18,36 NA.



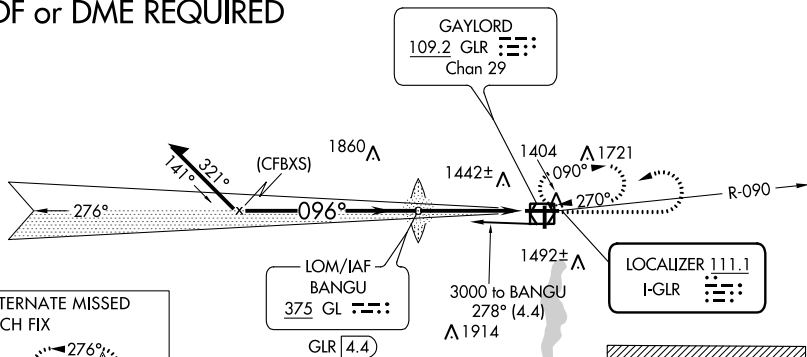
MISSED APPROACH:
Climb to 3000 then left turn direct GLR VOR/DME and hold.

ASOS
118.375

MINNEAPOLIS CENTER
134.6 354.05

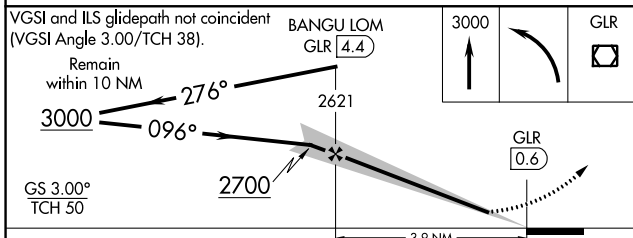
UNICOM
122.8 (CTAF) 0

ADF or DME REQUIRED

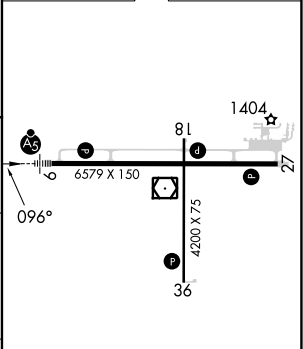


ALTERNATE MISSED APCH FIX

BANGU
375 GL 4.4
GLR 4.4
ADF REQUIRED



ELEV 1328 TDZE 1321



CATEGORY	A	B	C	D
S-ILS 9	1521-½ 200 (200-½)			
S-LOC 9	1860-½	539 (600-½)	1860-1	539 (600-1)
CIRCLING	1860-1 532 (600-1)	1940-1 612 (700-1)	2040-2 712 (800-2)	2080-2½ 752 (800-2½)

REIL Rwy 27, 18 and 36
MIRL Rwy 18-36
HRL Rwy 9-27

FAF to MAP 3.9 NM

Knots	60	90	120	150	180
Min:Sec	3:54	2:36	1:57	1:34	1:18

EC-1, 11 JUL 2024 to 08 AUG 2024

EC-1, 11 JUL 2024 to 08 AUG 2024