

WAAS CH 97427 W09A	APP CRS 096°	Rwy Idg TDZE Apt Elev	6579 1321 1328
----------------------------------------	------------------------	-----------------------------	-------------------------------------------

RNAV (GPS) RWY 9

GAYLORD RGNL (GLR)

⚠ Circling to Rwy 18 and Rwy 36 NA at night. Baro-VNAV and VDP NA when using Grayling altimeter setting. For uncompensated Baro-VNAV systems, LNAV/VNAV NA below -17°C (2°F) or above 35°C (95°F). DME/DME RNP-0.3 NA. When local altimeter setting not received, use Grayling altimeter setting and increase all DA 71 feet and all MDA 80 feet. Increase LNAV/VNAV all Cats visibility 1/8 mile and Circling Cats C and D visibility 1/4 mile. Inoperative table does not apply to LNAV Cats A and B. For inoperative MALSR increase LNAV Cats C and D visibility to 1%. When using Grayling altimeter setting increase LNAV Cats C and D visibility to 1%.

MALSR

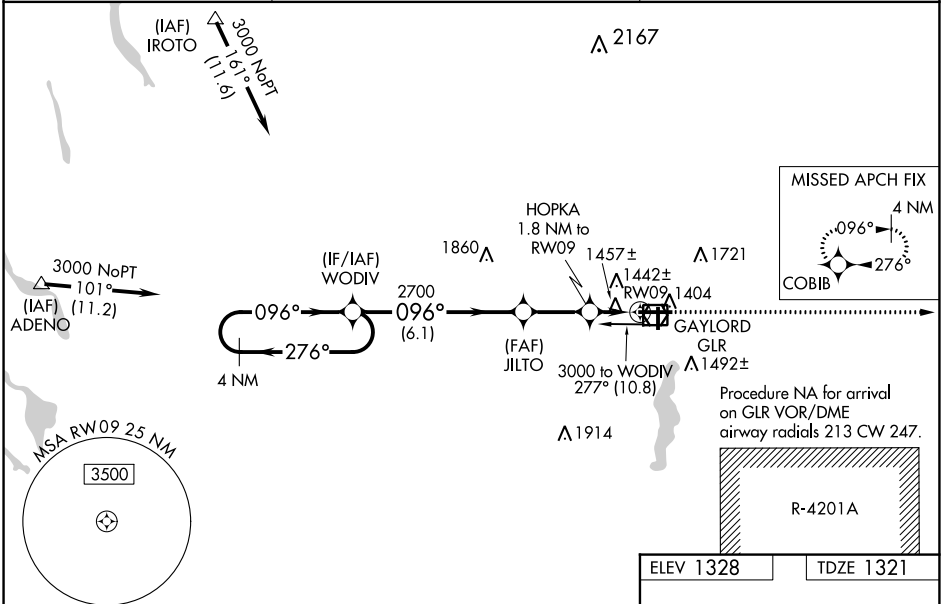


MISSED APPROACH:
Climb to 3100 direct COBIB and hold.

ASOS
118.375

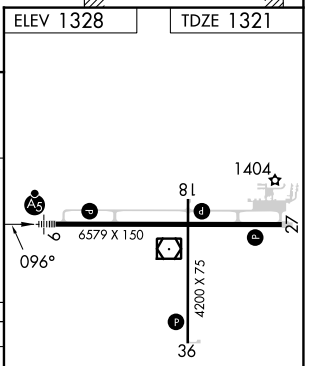
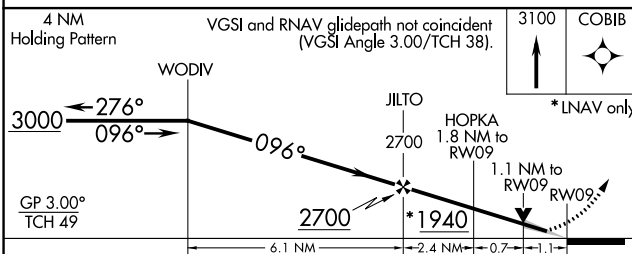
MINNEAPOLIS CENTER
134.6 354.05

UNICOM
122.8 (CTAF)



EC-1, 11 JUL 2024 to 08 AUG 2024

EC-1, 11 JUL 2024 to 08 AUG 2024



CATEGORY	A	B	C	D
LPV DA		1571-1	250 (300-1)	
LNAV/VNAV DA		1732-1	411 (500-1)	
LNAV MDA		1720-1	399 (400-1)	
CIRCLING	1840-1 512 (600-1)	1940-1 612 (700-1)	2040-2 712 (800-2)	2080-2½ 752 (800-2½)

REIL Rwy 18, 27 and 36
MIRL Rwy 18-36
HIRL Rwy 9-27