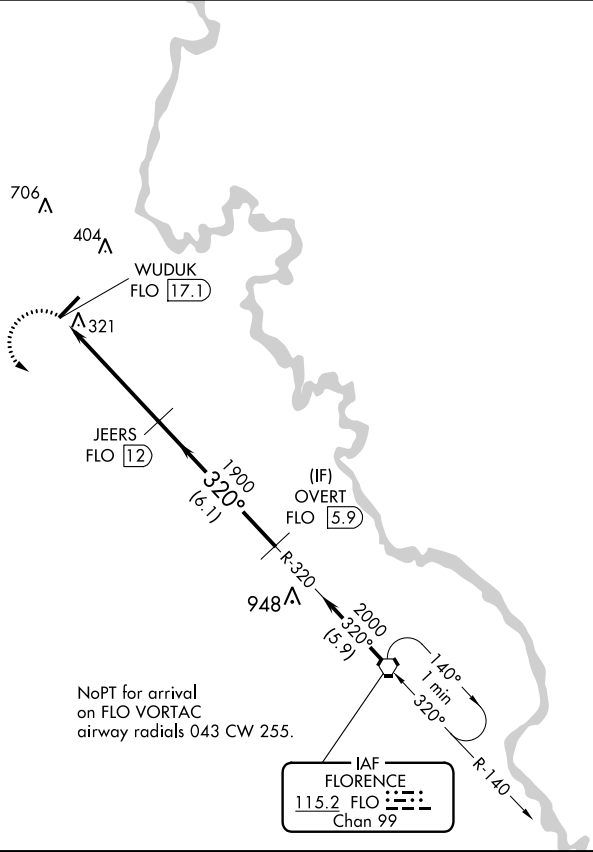
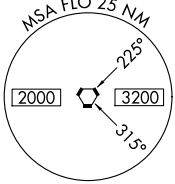


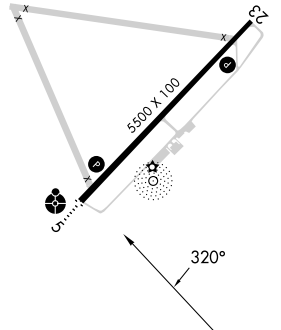
VORTAC FLO 115.2 Chan 99	APP CRS 320°	Rwy Idg TDZE Apt Elev	N/A N/A 192
--	------------------------	-----------------------------	--

VOR-A
DARLINGTON COUNTY (UDG)

DME required.		MISSED APPROACH: Climbing left turn to 2000 direct FLO VORTAC and hold.	
AWOS-3PT 119.925	FLORENCE APP CON * 118.6 341.7	CLNC DEL 118.55	UNICOM 123.0 (CTAF) 0



ELEV 192



MIRL Rwy 5-23 **0**
REIL Rwys 5 and 23 **0**

2000	FLO	OVERT FLO 5.9		
WUDUK FLO 17.1	JEERS FLO 12	2000		
5.1 NM	6.1 NM			
CATEGORY	A	B	C	D
CIRCLING	640-1 448 (500-1)	660-1 468 (500-1)	720-1½ 528 (600-1½)	1020-2¾ 828 (900-2¾)

SE-2, 11 JUL 2024 to 08 AUG 2024

SE-2, 11 JUL 2024 to 08 AUG 2024