

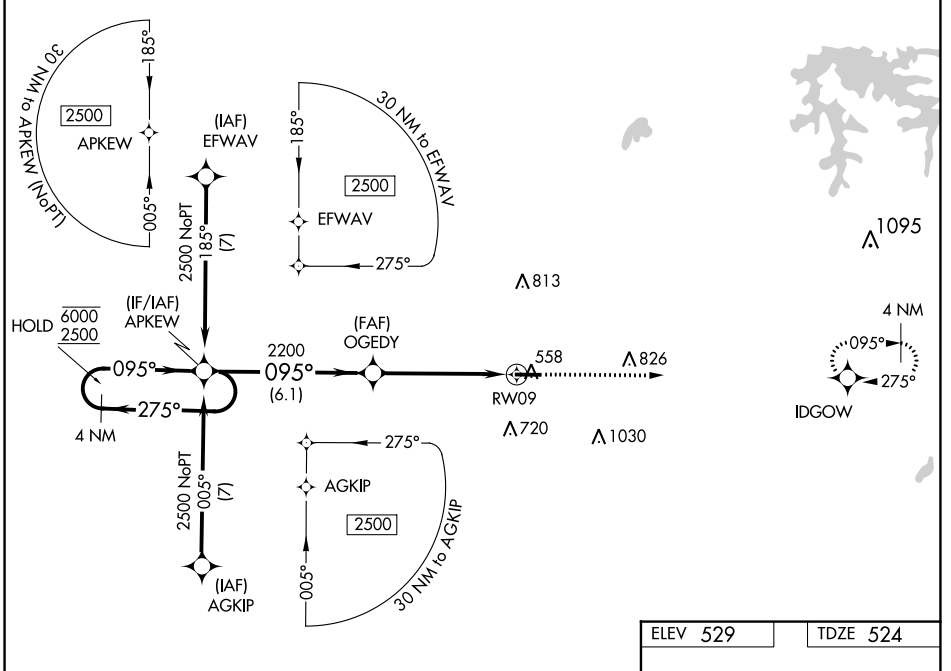
WAAS CH 49207 W09A	APP CRS 095°	Rwy Idg TDZE Apt Elev	5501 524 529
--	------------------------	-----------------------------	---

RNAV (GPS) RWY 9

HUNTINGBURG (HNB)

RNP APCH - GPS.		MISSED APPROACH: Climb to 2500 direct IDGOW and hold.	
<p>▼ Rwy 9 helicopter visibility reduction below $\frac{3}{4}$ SM NA. For uncompensated Baro-VNAV systems, LNAV/VNAV NA below -16°C or above 54°C.</p>			

AWOS-3PT 118.250	EVANSVILLE APP CON ★ 124.025 290.9	CLNC DEL 118.8	UNICOM 122.8 (CTAF) 0
----------------------------	--	--------------------------	---------------------------------



EC-2, 11 JUL 2024 to 08 AUG 2024

EC-2, 11 JUL 2024 to 08 AUG 2024

4 NM Holding Pattern		VGSI and RNAV glidepath not coincident (VGSI Angle 3.00/TCH 40).		2500	IDGOW
CATEGORY	A	B	C	D	
LPV DA		774- $\frac{3}{4}$	250 (300- $\frac{3}{4}$)		
LNAV/VNAV DA		810- $\frac{7}{8}$	286 (300- $\frac{7}{8}$)		
LNAV MDA	1020-1	496 (500-1)	1020-1 $\frac{3}{8}$	496 (500-1 $\frac{3}{8}$)	
C CIRCLING	1020-1 491 (500-1)	1040-1 511 (600-1)	1040-1 $\frac{1}{2}$ 511 (600-1 $\frac{1}{2}$)	1380-2 $\frac{3}{4}$ 851 (900-2 $\frac{3}{4}$)	MIRL Rwy 9-27 0 REIL Rws 9 and 27 0