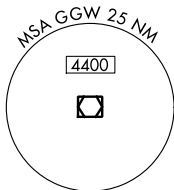


VOR/DME GWW <b>113.9</b> Chan <b>86</b>	APP CRS <b>293°</b>	Rwy Idg TDZE Apt Elev	<b>5001</b> <b>2294</b> <b>2296</b>
---	------------------------	-----------------------------	---

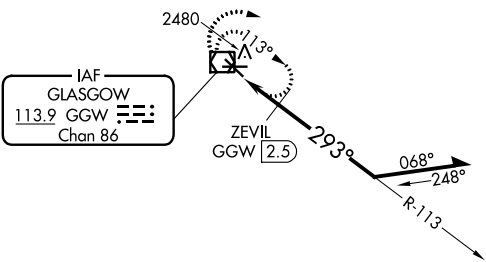
# VOR RWY 30

WOKAL FLD/GLASGOW-VALLEY COUNTY (GGW)

<p><b>▼</b> ZEVIL fix Straight-in minimums NA when using Wolf Point altimeter setting. <b>▲</b> When local altimeter setting not received, use Wolf Point altimeter setting and increase all MDA 160 feet and increase visibilities all Cats ½ SM.</p>	<p>MISSED APPROACH: Climb to 4000 in GGW VOR/DME holding pattern.</p>	
<p>ASOS <b>135.175</b></p>	<p>SALT LAKE CENTER <b>126.85 305.2</b></p>	<p>UNICOM <b>122.8 (CTAF) 0</b></p>



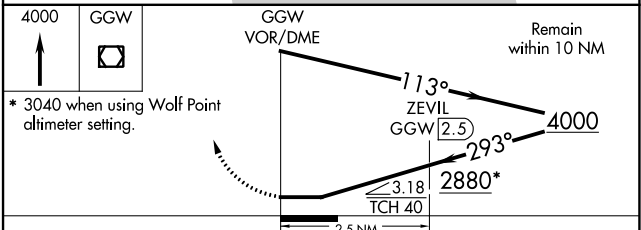
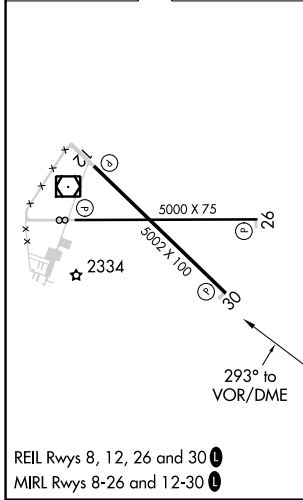
**▲** 3022



NW-1, 11 JUL 2024 to 08 AUG 2024

NW-1, 11 JUL 2024 to 08 AUG 2024

ELEV 2296	<b>D</b>	TDZE 2294
-----------	----------	-----------



CATEGORY	A	B	C	D
S-30	2880-1	586 (600-1)	2880-1¾	586 (600-1¾)
CIRCLING	2880-1	584 (600-1)	2880-1¾ 584 (600-1¾)	2900-2 604 (700-2)
ZEVIL FIX MINIMUMS				
S-30	2740-1	446 (500-1)	2740-1⅜	446 (500-1⅜)
CIRCLING	2780-1	484 (500-1)	2780-1½ 484 (500-1½)	2900-2 604 (700-2)

# VOR RWY 30