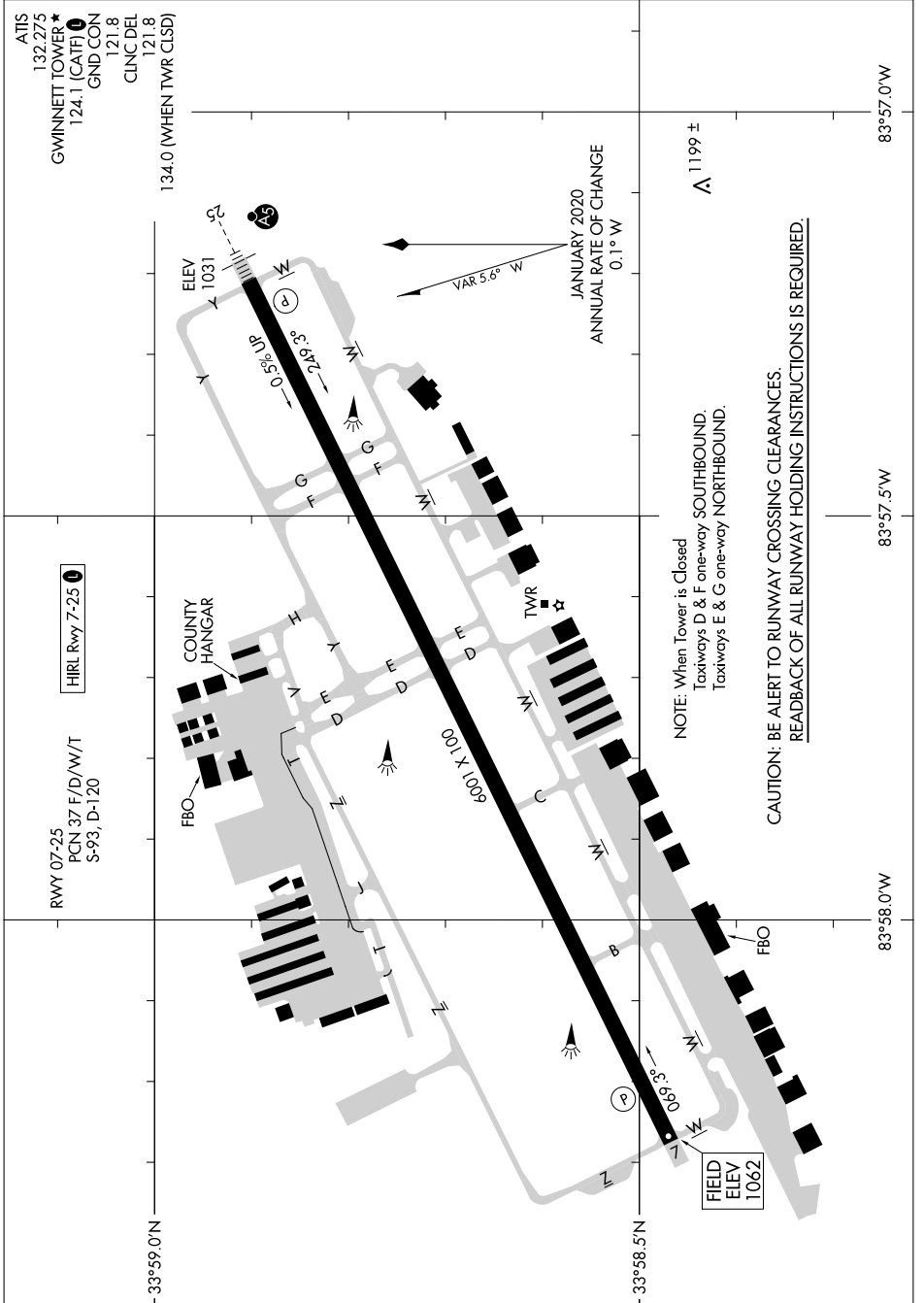


AIRPORT DIAGRAM

AL-5385 (FAA)

GWINNETT COUNTY/BRISCOE FLD (LZU)
LAWRENCEVILLE, GEORGIA

SE-4, 11 JUL 2024 to 08 AUG 2024



ATIS
132.275
GWINNETT TOWER ★
124.1 (CATF)
GND CON
121.8
CLNC DEL
121.8
134.0 (WHEN TWR CLSD)

HIRL Rwy 7-25

RWY 07-25
PCN 37 F/D/W/T
S-93, D-120

COUNTY HANGAR

FBO

TWR

FIELD ELEV
ELEV
1062

NOTE: When Tower is Closed
Taxiways D & F one-way SOUTHBOUND.
Taxiways E & G one-way NORTHBOUND.

CAUTION: BE ALERT TO RUNWAY CROSSING CLEARANCES.
READBACK OF ALL RUNWAY HOLDING INSTRUCTIONS IS REQUIRED.

▲ 1199 ±

JANUARY 2020
ANNUAL RATE OF CHANGE
0.1° W

VAR 5.6° W

33°59.0'N

33°58.5'N

83°58.0'W

83°57.5'W

83°57.0'W

AIRPORT DIAGRAM

LAWRENCEVILLE, GEORGIA
GWINNETT COUNTY/BRISCOE FLD (LZU)

SE-4, 11 JUL 2024 to 08 AUG 2024