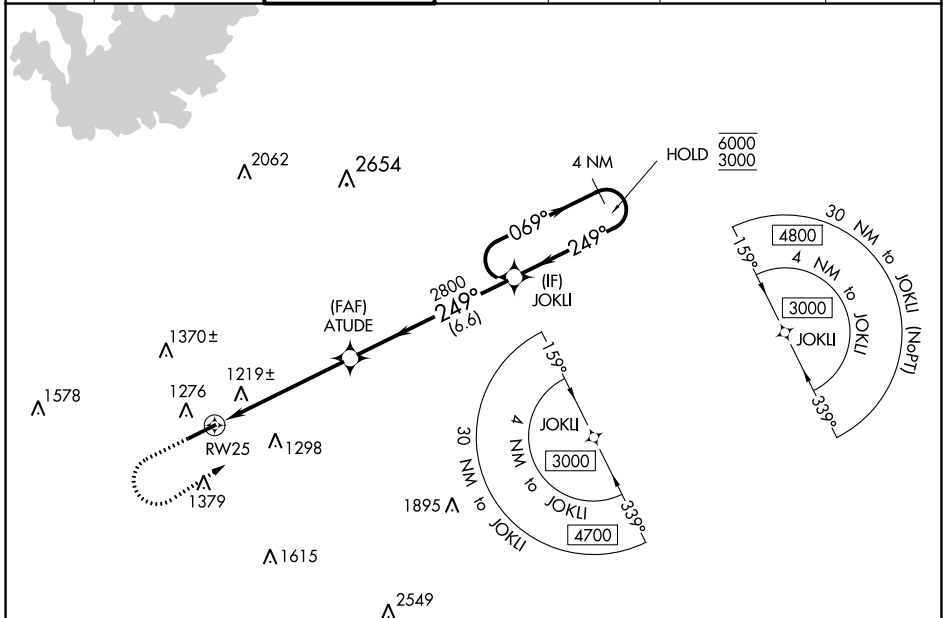


WAAS CH 82021 W25A	APP CRS 249°	Rwy Idg TDZE Apt Elev	6001 1038 1062
--	------------------------	-----------------------------	---

RNAV (GPS) RWY 25

GWINNETT COUNTY/BRISCOE FLD (LZU)

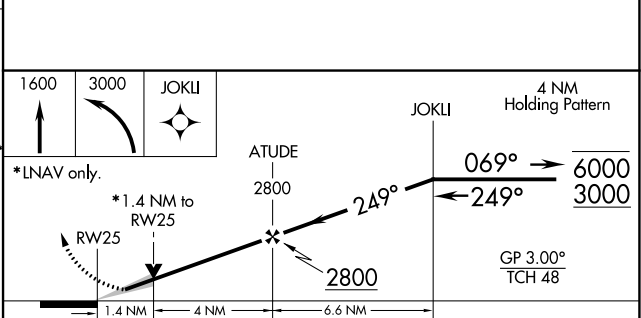
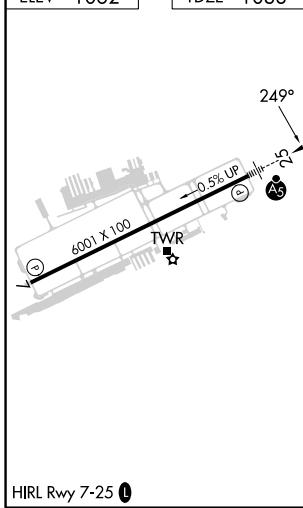
RNP APCH.				MALSRL 		MISSED APPROACH: Climb to 1600 then climbing left turn to 3000 direct JOKLI and hold.	
For uncompensated Baro-VNAV systems, LNAV/VNAV NA below -17°C or above 54°C. For inop ALS, increase LNAV Cat C/D visibility to 1 3/8 SM.							
ATIS 132.275	ATLANTA APP CON 126.975 239.275	GWINNETT TOWER ★ 124.1 (CTAF)	GND CON 121.8	CLNC DEL 121.8	CLNC DEL 134.0 (When twr closed)	UNICOM 123.05	



SE-4, 11 JUL 2024 to 08 AUG 2024

SE-4, 11 JUL 2024 to 08 AUG 2024

ELEV 1062	TDZE 1038
-----------	-----------



CATEGORY	A	B	C	D
LPV DA		1238-1/2	200 (200-1/2)	
LNAV/VNAV DA		1477-3/4	439 (500-3/4)	
LNAV MDA	1520-1/2	482 (500-1/2)	1520-1	482 (500-1)
CIRCLING	1640-1	578 (600-1)	1680-1 3/4 618 (700-1 3/4)	1700-2 638 (700-2)