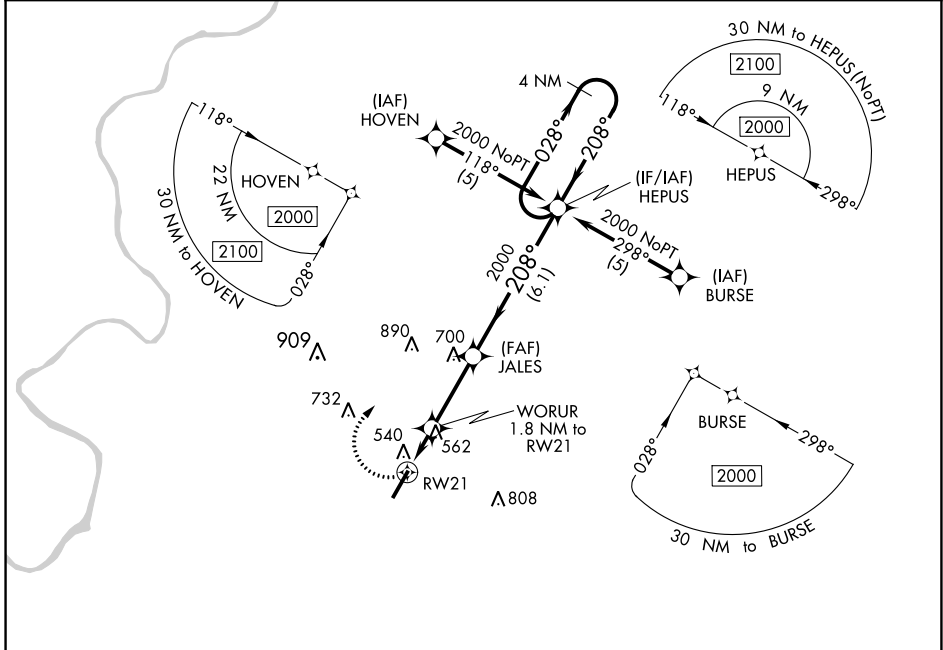


APP CRS	Rwy Idg	6028
208°	TDZE	419
	Apt Elev	419

RNAV (GPS) RWY 21
MONROE COUNTY AEROPLEX (MVC)

RNP APCH.	MISSED APPROACH: Climbing right turn to 2000 direct HEPUS and hold.
<p>▼ Obtain local altimeter setting on CTAF; when not received, use Evergreen Rgnl/Middleton Fld altimeter setting. Procedure NA at night. Rwy 21 helicopter visibility reduction below 1 SM NA.</p> <p>▲ NA</p>	

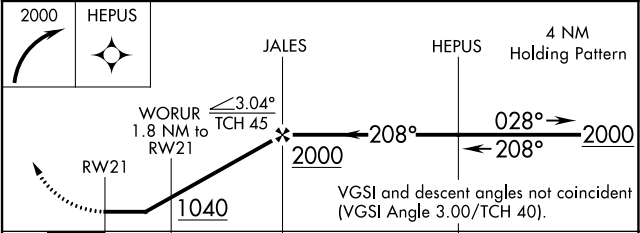
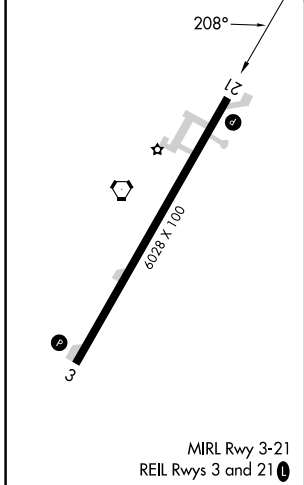
ATLANTA CENTER 118.55 267.9	UNICOM 123.0 (CTAF)
---------------------------------------	-------------------------------



SE-4, 11 JUL 2024 to 08 AUG 2024

SE-4, 11 JUL 2024 to 08 AUG 2024

ELEV 419	TDZE 419
----------	----------



CATEGORY	A	B	C	D
LNAV/MDA	880-1 461 (500-1)	880-1 461 (500-1 1/4)	880-1 1/4 461 (500-1 1/2)	880-1 1/2 461 (500-1 1/2)
CIRCLING	880-1 461 (500-1)	920-1 501 (600-1)	920-1 1/2 501 (600-1 1/2)	1120-2 1/4 701 (800-2 1/4)
EVERGREEN RGNL/MIDDLETON FLD ALTIMETER SETTING MINIMUMS				
LNAV/MDA	940-1 521 (600-1)	940-1 1/2 521 (600-1 1/2)	940-1 3/4 521 (600-1 3/4)	940-1 3/4 521 (600-1 3/4)
CIRCLING	940-1 521 (600-1)	980-1 561 (600-1)	980-1 1/2 561 (600-1 1/2)	1180-2 1/2 761 (800-2 1/2)