

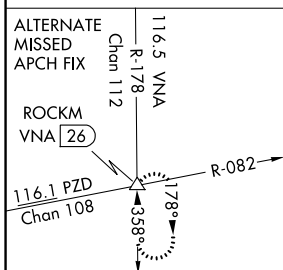
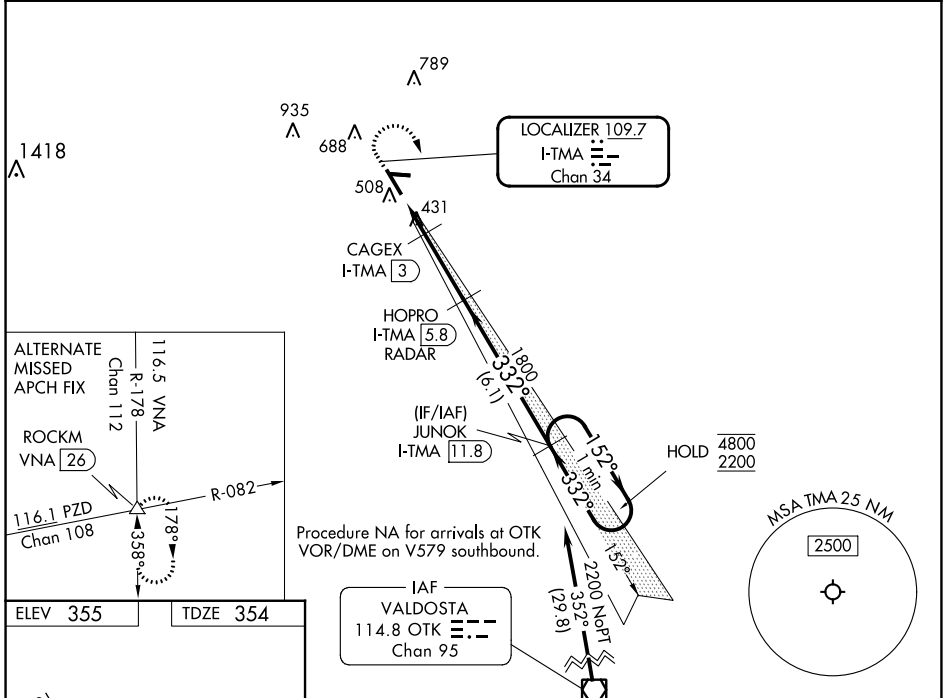
LOC/DME I-TMA 109.7 Chan 34	APP CRS 332°	Rwy Idg 6506 TDZE 354 Apt Elev 355
---	------------------------	---

ILS or LOC RWY 34

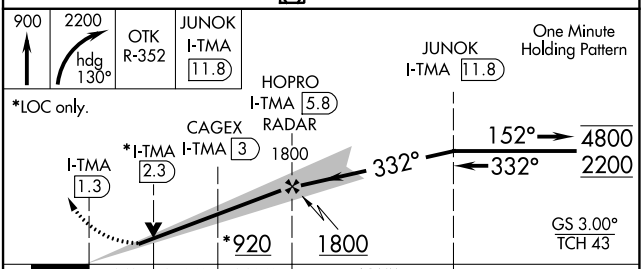
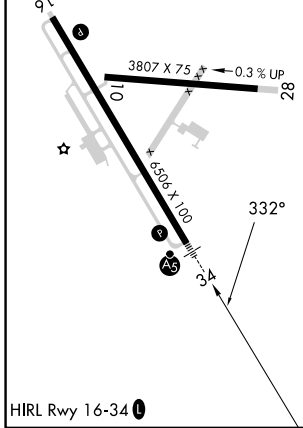
HENRY TIFT MYERS (TMA)

DME required.	MALSR 	MISSED APPROACH: Climb to 900 then climbing right turn to 2200 on heading 130° and OTK VOR/DME R-352 to JUNOK/I-TMA 11.8 DME and hold.
Circling Rwy 10 NA at night. Rwy 34 helicopter visibility reduction below 3/4 SM NA. For inop ALS, increase S-ILS 34 visibility all Cats to 7/8 SM and increase S-LOC 34 visibility all Cats to 1 SM.		

AWOS-3PT 118.525	VALDOSTA APP CON ★ 126.6 285.6	UNICOM 122.7 (CTAF) 0
----------------------------	--	---------------------------------



ELEV 355	TDZE 354
----------	----------



One Minute Holding Pattern	JUNOK I-TMA 11.8	HOPRO I-TMA 5.8	CAGEX I-TMA 3	I-TMA 1.3	*I-TMA 2.3	*I-TMA 2.8	1800	152°	4800	332°	2200	GS 3.00°	TCH 43
*LOC only.	1 NM	0.7 NM	2.8 NM	6.1 NM									
CATEGORY	A	B	C	D									
S-ILS 34		623-3/4	269 (300-3/4)										
S-LOC 34		700-3/4	346 (400-3/4)										
CIRCLING	920-1 565 (600-1)	1060-1 705 (800-1)	1060-2 705 (800-2)	1240-3 885 (900-3)									

SE-4, 11 JUL 2024 to 08 AUG 2024

SE-4, 11 JUL 2024 to 08 AUG 2024