

TIFTON, GEORGIA

AL-5398 (FAA)

23334

WAAS CH <b>61118</b> <b>W34A</b>	APP CRS <b>332°</b>	Rwy Idg TDZE Apt Elev	<b>6506</b> <b>354</b> <b>355</b>
--	------------------------	-----------------------------	---

# RNAV (GPS) RWY 34

HENRY TIFT MYERS (TMA)

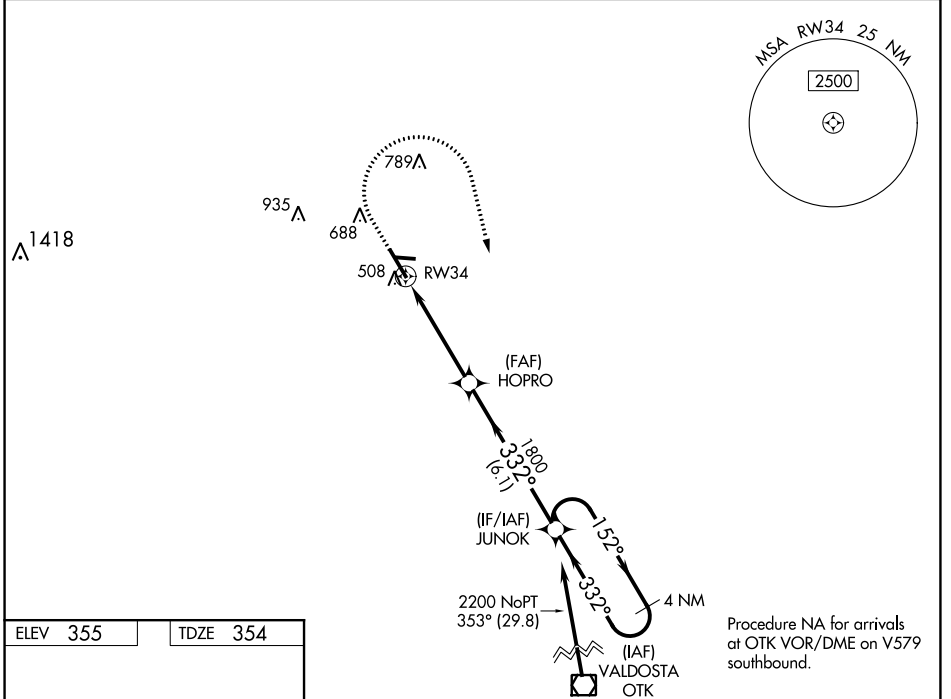
**⚠** For uncompensated Baro-VNAV systems, LNAV/VNAV NA below -15°C (5°F) or above 54°C (130°F).  
**⚠** DME/DME RNP-0.3 NA. Circling Rwy 10 NA at night.  
 Rwy 34 helicopter visibility reduction below ¾ SM NA.

**MALSR**  
  
**MISSED APPROACH:** Climb to 900 then climbing right turn to 2200 direct JUNOK and hold.

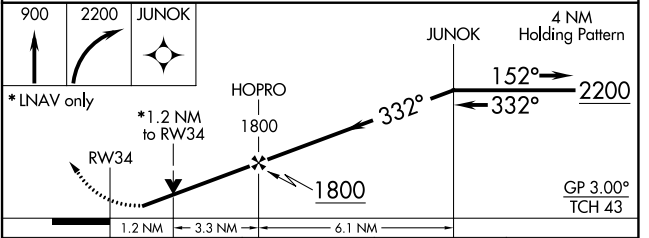
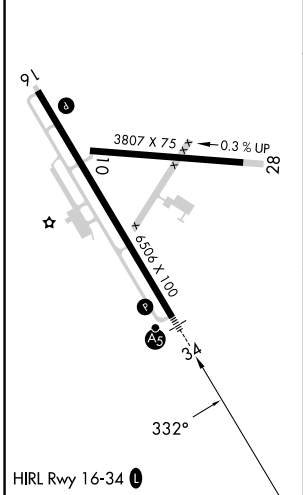
AWOS-3PT  
**118.525**

VALDOSTA APP CON ★  
**126.6 285.6**

UNICOM  
**122.7 (CTAF) 0**



ELEV 355 TDZE 354



CATEGORY	A	B	C	D
LPV DA		638-¾	284 (300-¾)	
LNAV/VNAV DA		684-¾	330 (400-¾)	
LNAV MDA		780-¾	426 (500-¾)	
<b>C</b> CIRCLING	920-1 565 (600-1)	1060-1 705 (800-1)	1060-2 705 (800-1)	1240-3 885 (900-3)

TIFTON, GEORGIA  
 Amdt 1A 17AUG17

31°26'N-83°29'W

# RNAV (GPS) RWY 34

HENRY TIFT MYERS (TMA)

SE-4, 11 JUL 2024 to 08 AUG 2024

SE-4, 11 JUL 2024 to 08 AUG 2024