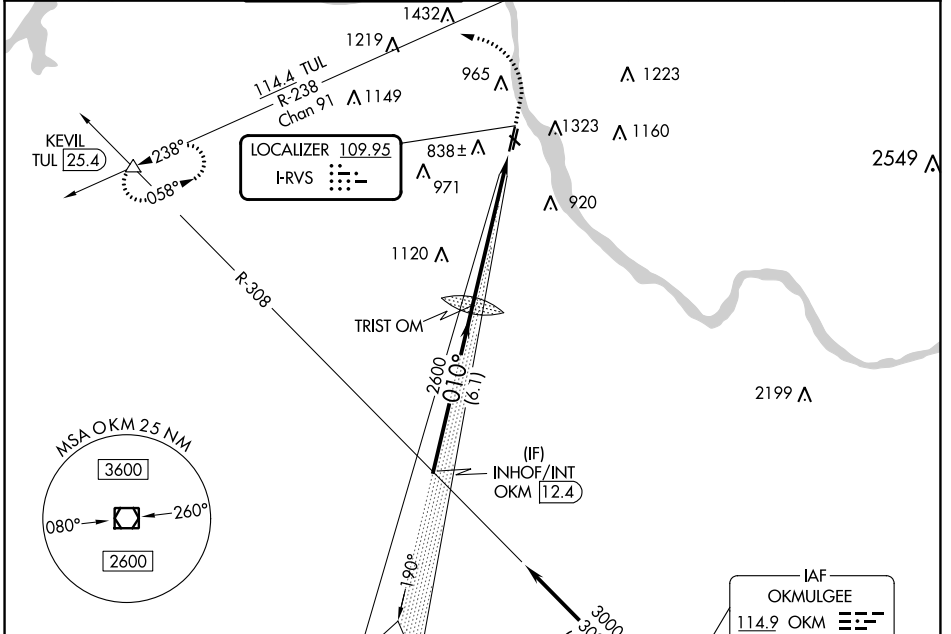


LOC I-RVS	APP CRS	Rwy Idg	<b>5102</b>
<b>109.95</b>	<b>010°</b>	TDZE	<b>626</b>
		Apt Elev	<b>638</b>

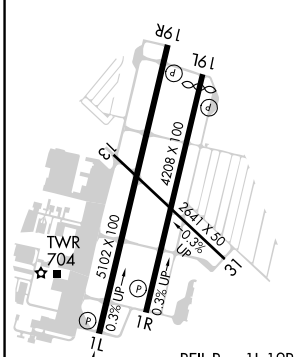
# ILS or LOC RWY 1L

TULSA RIVERSIDE (RVS)

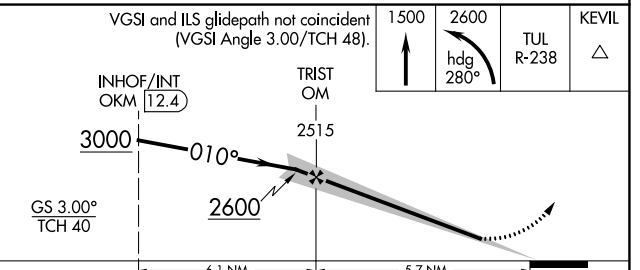
<p>Circling NA northeast of Rwsy 31 and 19L.</p>		<p>MISSED APPROACH: Climb to 1500 then climbing left turn to 2600 on heading 280° and TUL VORTAC R-238 to KEVIL INT/TUL 25.4 DME and hold.</p>			
ATIS	TULSA APP CON	RIVERSIDE TOWER ★	GND CON	CLNC DEL	UNICOM
<b>126.5</b>	<b>134.7</b>	<b>120.3 (CTAF) 0</b>	<b>121.7</b>	<b>124.5</b>	<b>122.95</b>



ELEV 638	<b>D</b>	TDZE 626
----------	----------	----------



Procedure NA for arrival on OKM VOR/DME airway radials 308 CW 359.



CATEGORY	A	B	C	D
S-ILS 1L	826- $\frac{3}{4}$ 200 (200- $\frac{3}{4}$ )			
S-LOC 1L	1220-1	594 (600-1)	1220-1 $\frac{3}{4}$	594 (600-1 $\frac{3}{4}$ )
<input checked="" type="checkbox"/> CIRCLING	1260-1 622 (700-1)	1280-1 642 (700-1)	1280-1 $\frac{3}{4}$ 642 (700-1 $\frac{3}{4}$ )	1360-2 $\frac{1}{4}$ 722 (800-2 $\frac{1}{4}$ )

TULSA, OKLAHOMA  
Amdt 3 28FEB19

36°02'N-95°59'W

# TULSA RIVERSIDE (RVS)

## ILS or LOC RWY 1L

SC-1, 11 JUL 2024 to 08 AUG 2024

SC-1, 11 JUL 2024 to 08 AUG 2024