

VORTAC TUL 114.4 Chan 91	APP CRS 037°	Rwy Idg TDZE Apt Elev N/A N/A 638
--	------------------------	---

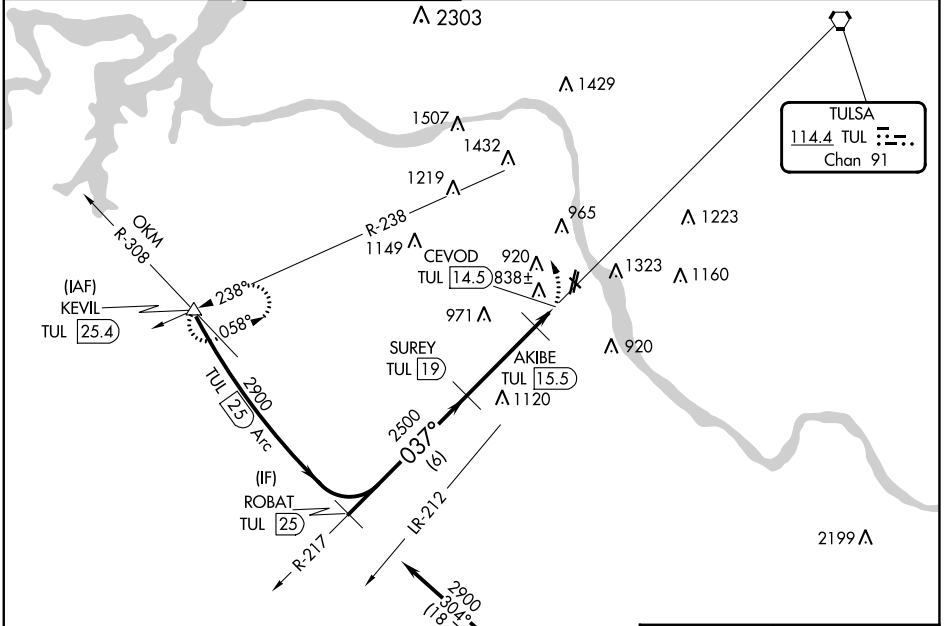
VOR/DME-A

TULSA RIVERSIDE (RVS)

⚠ Circling NA northeast of Rws 31 and 19L. When local altimeter setting not received, use Tulsa Int'l altimeter setting and increase MDA 40 feet; increase Cat C/D visibilities ¼ mile.

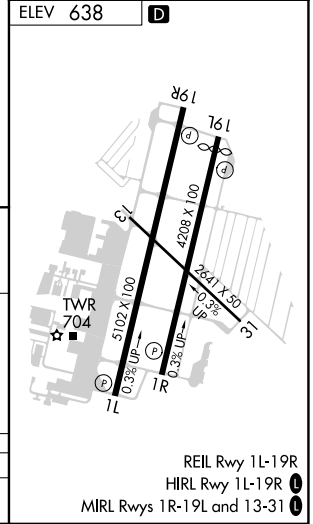
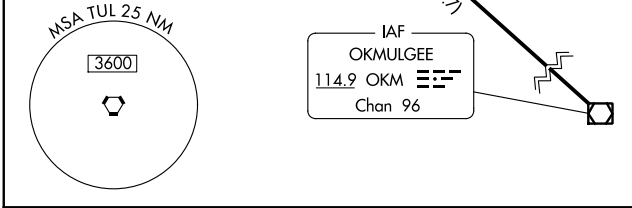
MISSED APPROACH: Climbing left turn to 2900 via heading 280° and TUL R-238 to KEVIL Int/TUL 25.4 DME and hold.

ATIS 126.5	TULSA APP CON 134.7	RIVERSIDE TOWER * 120.3 (CTAF) 0	GND CON 121.7	CLNC DEL 124.5	UNICOM 122.95
----------------------	-------------------------------	---	-------------------------	--------------------------	-------------------------



SC-1, 11 JUL 2024 to 08 AUG 2024

SC-1, 11 JUL 2024 to 08 AUG 2024



	ROBAT TUL [25] 2900	SUREY TUL [19]	AKIBE TUL [15.5]	CEVOD TUL [14.5]	KEVIL TUL R-238 △
	6 NM		3.5 NM	1 NM	0.7
CATEGORY	A	B	C	D	
C CIRCLING	1260-1 622 (700-1)	1280-1 642 (700-1)	1280-1 ¾ 642 (700-1 ¾)	1380-2 ½ 742 (800-2 ½)	

REIL Rwy 11L-19R
HIRL Rwy 11L-19R **0**
MIRL Rws 1R-19L and 13-31 **0**