

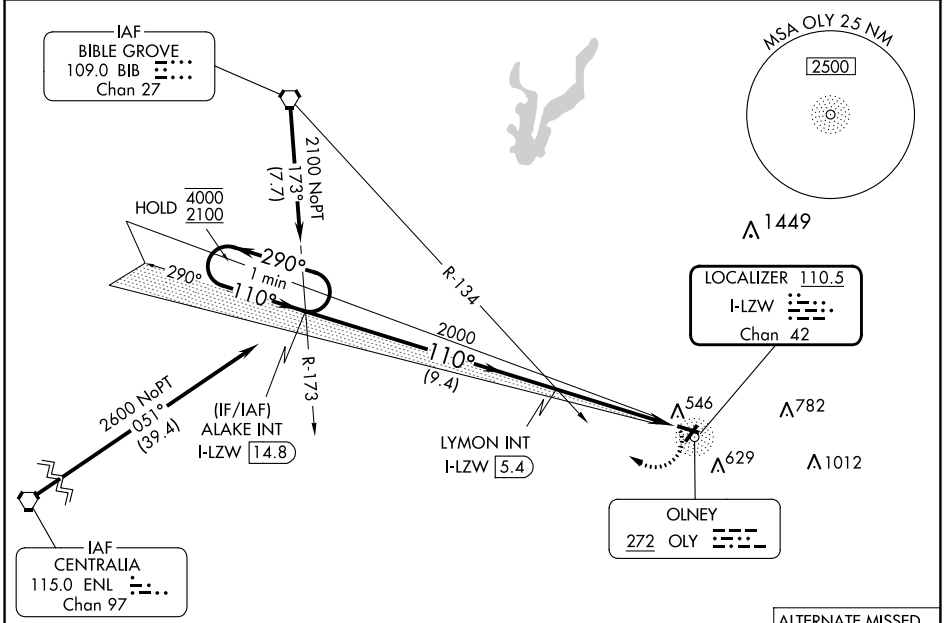
LOC/DME I-LZW 110.5 Chan 42	APP CRS 110°	Rwy Idg 4099 TDZE 482 Apt Elev 482
---	------------------------	---

LOC RWY 11

OLNEY-NOBLE (OLY)

<p>AWOS-3 119.275</p>	<p>KANSAS CITY CENTER 124.3 269.15</p>	<p>UNICOM 123.0 (CTAF)</p>
---	--	--

MISSED APPROACH: Climbing right turn to 2400 on heading 290° and BIB VORTAC R-173 to ALAKE INT/I-LZW LOC/DME 14.8 DME and hold.



EC-3, 11 JUL 2024 to 08 AUG 2024

EC-3, 11 JUL 2024 to 08 AUG 2024

ELEV 482	TDZE 482
REIL Rwy 4 and 11 MIRL Rwy 4-22 and 11-29	
FAF to MAP 4.6 NM	
Knots	60 90 120 150 180
Min:Sec	4:36 3:04 2:18 1:50 1:32

One Minute Holding Pattern VGSIs and descent angles not coincident (VGSIs Angle 3.00/TCH 22). ALAKE INT I-LZW 14.8 LYMON INT I-LZW 5.4	2400 hdg 290° BIB R-173 ALAKE INT
4000 2100 ← 290° → 110° → 110° → 2000 * 3.03° TCH 45 9.4 NM 3.3 NM 1.3 NM	I-LZW 2.1 I-LZW 0.8
CATEGORY A B C D	S-11 920-1 438 (500-1) 920-1¼ 438 (500-1¼)
CIRCLING	920-1 438 (500-1) 940-1 458 (500-1) 960-1½ 478 (500-1½) 1180-2¼ 698 (700-2¼)