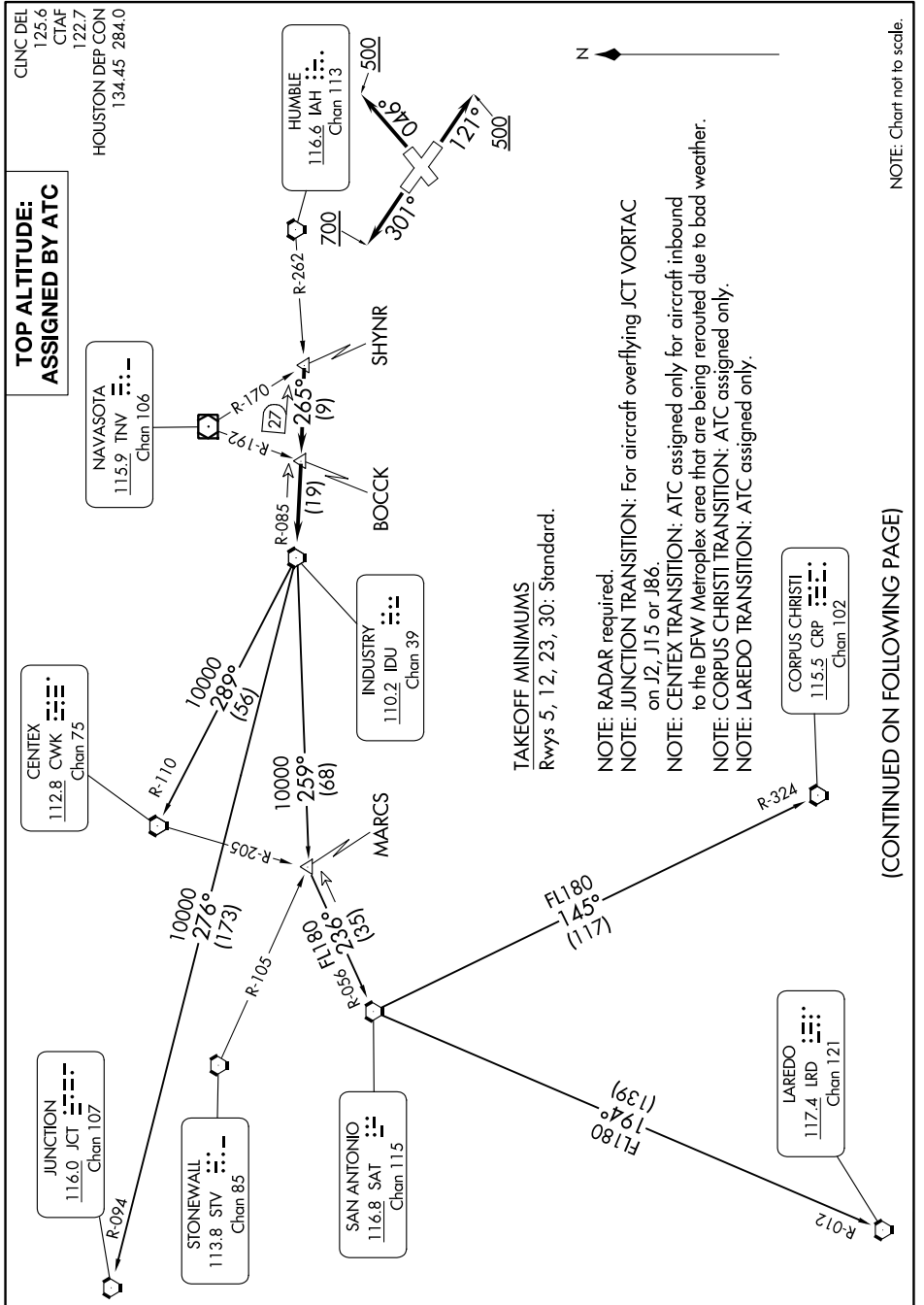


SC-5, 11 JUL 2024 to 08 AUG 2024



**TOP ALTITUDE:
ASSIGNED BY ATC**

CENTEX
112.8 CWK
Chan 75

NAVASOTA
115.9 TNV
Chan 106

INDUSTRY
110.2 IDU
Chan 39

CORPUS CHRISTI
115.5 CRP
Chan 102

LAREDO
117.4 LRD
Chan 121

TAKEOFF MINIMUMS
Rwys 5, 12, 23, 30: Standard.

- NOTE: RADAR required.
- NOTE: JUNCTION TRANSITION: For aircraft overflying JCT VORTAC on J2, J15 or J86.
- NOTE: CENTEX TRANSITION: ATC assigned only for aircraft inbound to the DFW Metroplex area that are being rerouted due to bad weather.
- NOTE: CORPUS CHRISTI TRANSITION: ATC assigned only.
- NOTE: LAREDO TRANSITION: ATC assigned only.

NOTE: Chart not to scale.

(CONTINUED ON FOLLOWING PAGE)

SC-5, 11 JUL 2024 to 08 AUG 2024