

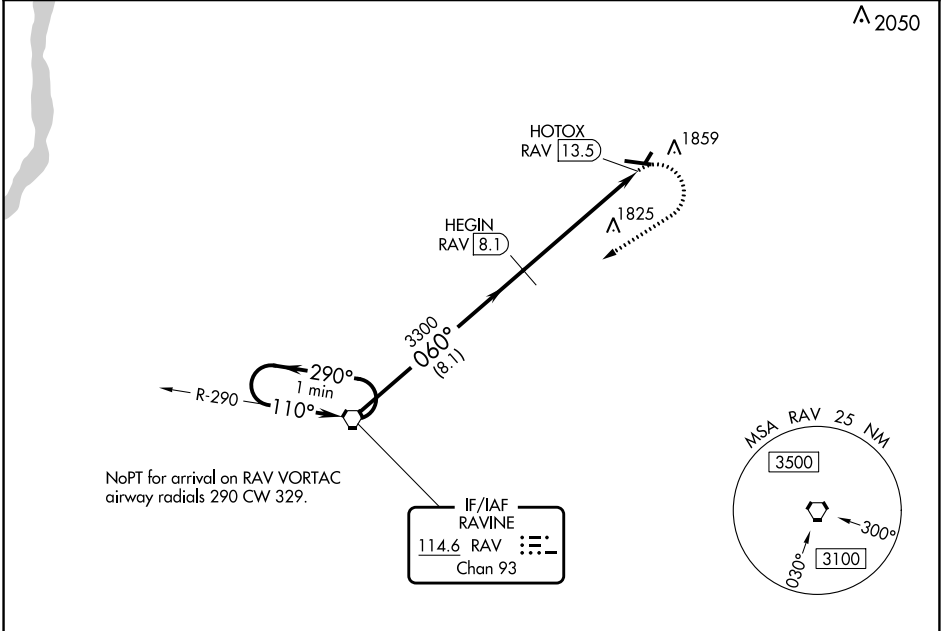
VORTAC RAV 114.6 Chan 93	APP CRS 060°	Rwy Idg TDZE Apt Elev N/A N/A 1729
--	------------------------	--

VOR-A
SCHUYLKILL COUNTY/JOE ZERBEY (Z.E.R.)

NA Circling to Rwy 4, 22 NA at night. DME required.
When local altimeter setting not received, use Penn Valley altimeter setting and increase all MDAs 280 feet and visibility Cat C and D ¾ SM.

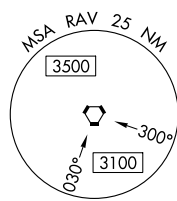
MISSED APPROACH: Climbing right turn to 4000 direct RAV VORTAC and hold.

AWOS-3 127.575	HARRISBURG APP CON 118.25 269.45	UNICOM 123.075 (CTAF) 0
--------------------------	--	--

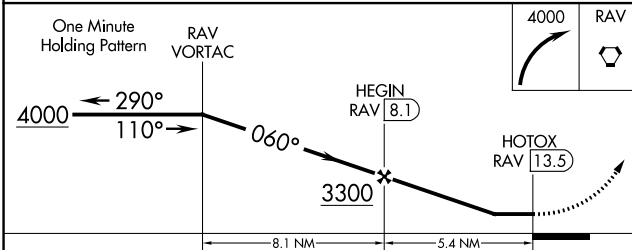
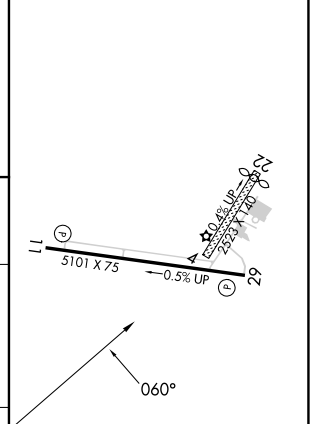


NoPT for arrival on RAV VORTAC
airway radials 290 CW 329.

IF/IAF
RAVINE
114.6 RAV
Chan 93



ELEV 1729



CATEGORY	A	B	C	D	MIRL Rwy 11-29 REIL Rwys 11 and 29
C CIRCLING	2160-1 431 (500-1)	2180-1 451 (500-1)	2240-1½ 511 (600-1½)	2280-2 551 (600-2)	0 0

NE-4, 11 JUL 2024 to 08 AUG 2024

NE-4, 11 JUL 2024 to 08 AUG 2024