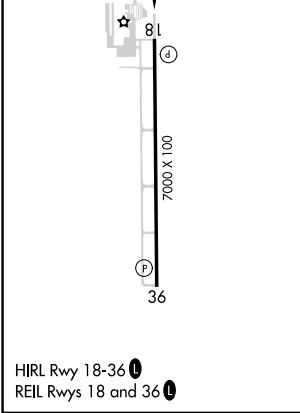
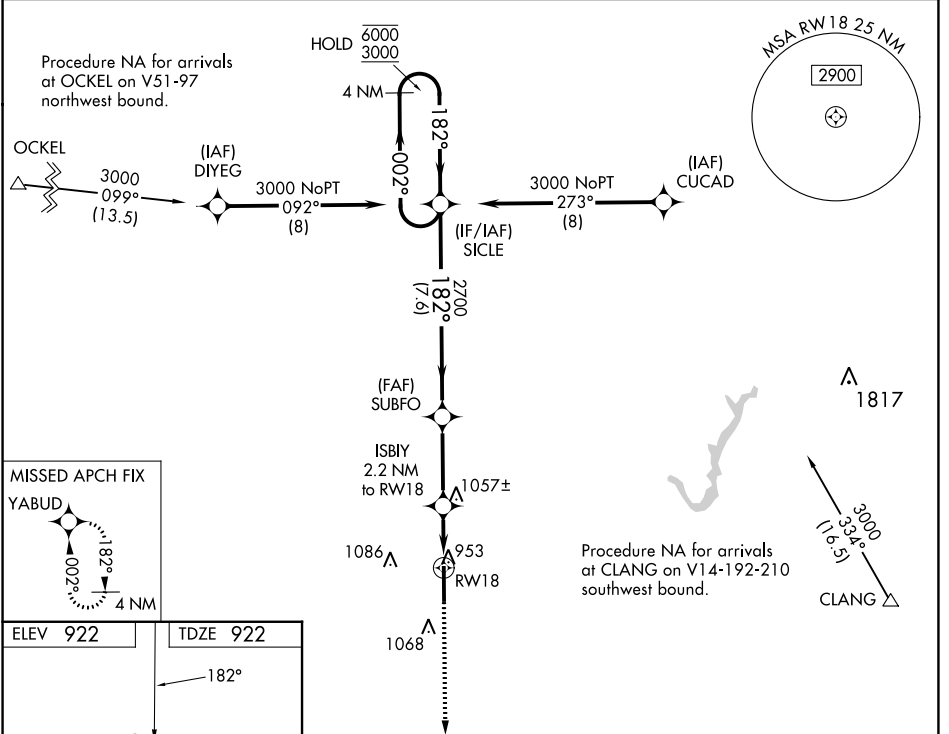


APP CRS	Rwy Idg	<b>7000</b>
<b>182°</b>	TDZE	<b>922</b>
	Apt Elev	<b>922</b>

# RNAV (GPS) RWY 18

INDIANAPOLIS EXEC (TYQ)

RNP APCH - GPS.		<p><b>⚠</b> Rwy 18 helicopter visibility reduction below <math>\frac{3}{4}</math> SM NA. For uncompensated Baro-VNAV systems, LNAV/VNAV NA below -16°C or above 54°C.</p>		<p>MISSED APPROACH: Climb to 3000 direct YABUD and hold.</p>	
AWOS-3PT	INDIANAPOLIS APP CON	CINC DEL	UNICOM		
<b>120.725</b>	<b>124.65 127.15 317.8</b>	<b>118.175</b>	<b>123.05 (CTAF)</b>		



	4 NM Holding Pattern	SICLE	SUBFO	ISBIY 2.2 NM to RWY 18	1.1 NM to RWY 18	1.1 NM to RWY 18	3000	YABUD
	6000	3000	2700	1680				
	7.6 NM		3.2 NM		1.1 NM		1.1 NM	
CATEGORY	A		B		C		D	
LNAV/VNAV DA	1216-7/8		294 (300-7/8)					
LNAV MDA	1320-1 398 (400-1)		1320-1 3/8 398 (400-1 1/8)					
<b>C</b> CIRCLING	1380-1 458 (500-1)		1440-1 1/2 518 (600-1 1/2)		1480-2 558 (600-2)			

EC-2, 11 JUL 2024 to 08 AUG 2024

EC-2, 11 JUL 2024 to 08 AUG 2024