

VORTAC VHP 116.3 Chan 110	APP CRS 201°	Rwy Idg 7000 TDZE 922 Apt Elev 922
---	------------------------	---

VOR RWY 18

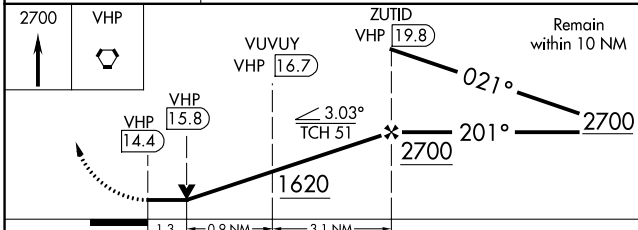
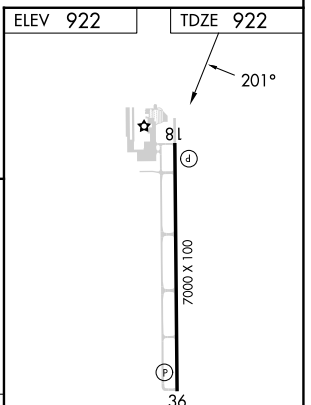
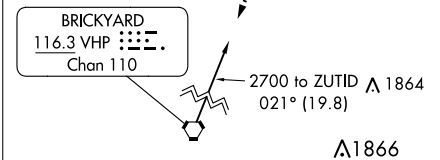
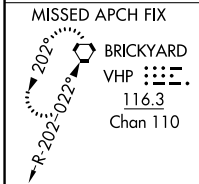
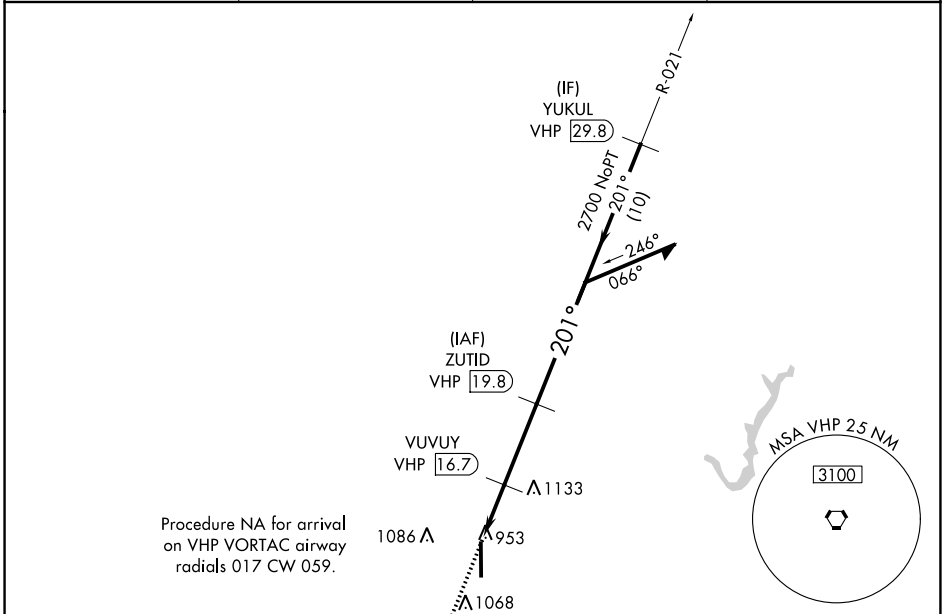
INDIANAPOLIS EXEC (TYQ)

DME required.

▼ Rwy 18 helicopter visibility reduction below 3/4 SM NA.

MISSED APPROACH: Climb to 2700 direct VHP VORTAC and hold.

AWOS-3PT 120.725	INDIANAPOLIS APP CON 124.65 127.15 317.8	CLNC DEL 118.175	UNICOM 123.05 (CTAF) ①
----------------------------	--	----------------------------	----------------------------------



CATEGORY	A	B	C	D
S-18	1400-1 478 (500-1)		1400-1 $\frac{3}{8}$ 478 (500-1 $\frac{3}{8}$)	
C CIRCLING	1400-1 478 (500-1)		1440-1 $\frac{1}{2}$ 518 (600-1 $\frac{1}{2}$)	1480-2 558 (600-2)

HIRL Rwy 18-36 ①

REIL Rwsy 18 and 36 ①

EC-2, 11 JUL 2024 to 08 AUG 2024

EC-2, 11 JUL 2024 to 08 AUG 2024