

WAAS CH 90519 W04A	APP CRS 040°	Rwy Idg TDZE Apt Elev	4500 1990 1999
--	------------------------	-----------------------------	---

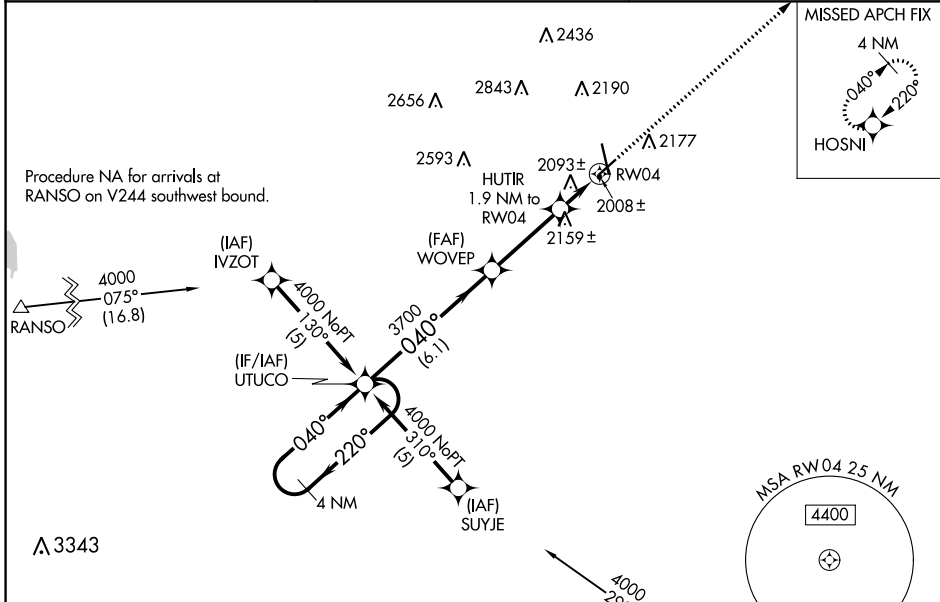
RNAV (GPS) RWY 4

HAYS RGNL (HYS)

⚠ For uncompensated Baro-VNAV systems, LNAV/VNAV NA below -18°C (0°F) or above 45°C (113°F).
 DME/DME RNP-0.3 NA. Visibility reduction by helicopters NA. When local altimeter setting not received, use Russell altimeter setting; increase LPV DA to 2309 feet and visibility all Cats ¼ SM; increase LNAV/VNAV DA to 2347 feet and visibility all Cats ¼ SM; increase all MDA 80 feet and visibility LNAV Cat C and Circling Cat C and D ¼ SM. Circling NA for Cat D northwest of Rwy 4 and west of Rwy 16. Baro-VNAV NA when using Russell altimeter setting.

MISSED APPROACH:
 Climb to 4000 direct HOSNI and hold.

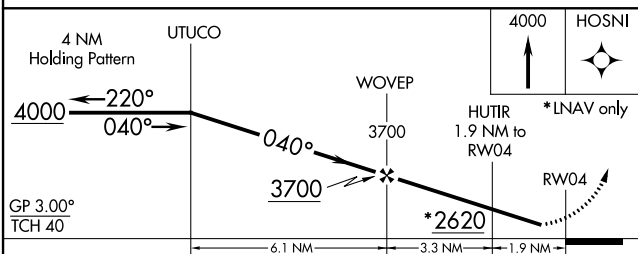
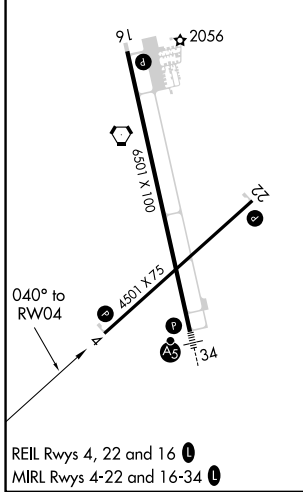
AWOS-3PT 125.525	KANSAS CITY CENTER 124.4 322.4	UNICOM 122.8 (CTAF) 0
----------------------------	--	---------------------------------



NC-2, 11 JUL 2024 to 08 AUG 2024

NC-2, 11 JUL 2024 to 08 AUG 2024

ELEV 1999	D	TDZE 1990
-----------	----------	-----------



CATEGORY	A	B	C	D
LPV DA		2240-1	250 (300-1)	
LNAV/VNAV DA		2278-1	288 (300-1)	
LNAV MDA	2420-1	430 (500-1)	2420-1¼ 430 (500-1¼)	2420-1½ 430 (500-1½)
CIRCLING	2480-1	481 (500-1)	2560-1½ 561 (600-1½)	2680-2¼ 681 (700-2¼)