

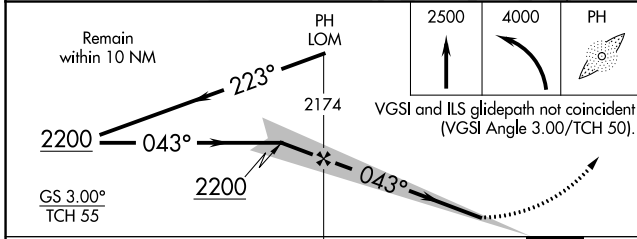
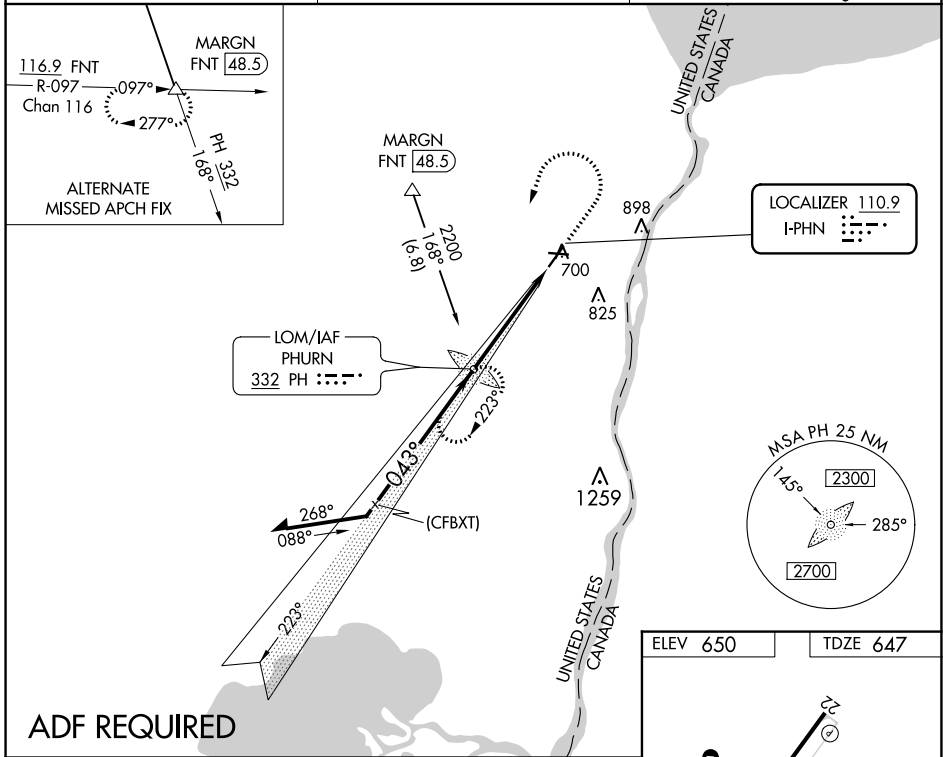
LOC I-PPHN 110.9	APP CRS 043°	Rwy Idg 5104
		TDZE 647
		Apt Elev 650

ILS or LOC RWY 4

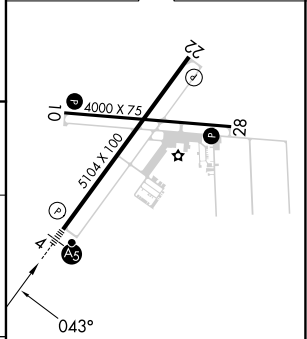
ST CLAIR COUNTY INTL (PHN)

<p>▽ ADF required. When local altimeter setting not received, use Troy altimeter setting and increase all DA 95 feet and all MDA 100 feet; increase S-LOC 4 Cats C and D and Circling Cats C and D visibility ¼ mile. For inop MALSRL when using Troy altimeter setting, increase S-ILS 4 all Cats visibility to ¾ mile. Night landing: Rwy 10, 22, 28 NA.</p>	<p>MALSRL</p>	<p>MISSED APPROACH: Climb to 2500 then climbing left turn to 4000 direct PHURN LOM and hold, continue climb-in-hold to 4000.</p>
---	----------------------	---

AWOS-3 118.375	SELRIDGE APP CON ★ 119.6 391.9	UNICOM 123.05 (CTAF) 0
--------------------------	--	----------------------------------



ELEV 650	TDZE 647
----------	----------



CATEGORY	A	B	C	D
S-ILS 4	847-½ 200 (200-½)			
S-LOC 4	1100-½ 453 (500-½)		1100-¾ 453 (500-¾)	
C CIRCLING	1160-1 510 (600-1)		1260-1¼ 610 (700-1¼) 1260-2 610 (700-2)	

HIRL Rwy 4-22	0
MIRL Rwy 10-28	0
REIL Rws 10, 22, and 28	0
FAF to MAP 4.6 NM	
Knots	60 90 120 150 180
Min:Sec	4:36 3:04 2:18 1:50 1:32

EC-1, 11 JUL 2024 to 08 AUG 2024

EC-1, 11 JUL 2024 to 08 AUG 2024