

WAAS CH <b>53523</b> <b>W04A</b>	APP CRS <b>043°</b>	Rwy Idg TDZE <b>647</b> Apt Elev <b>650</b>	<b>5104</b>
--	------------------------	---	-------------


# RNAV (GPS) RWY 4

ST CLAIR COUNTY INTL (PHN)

RNP APCH.

**⚠** Circling Rwy 10, 22, 28 NA at night. For uncompensated Baro-VNAV systems, LNAV/VNAV NA below -16°C or above 54°C. For inoperative ALS, increase LNAV/VNAV all Cats visibility to ¾ mile and LNAV Cat C/D visibility to 1 SM.

MALSRL

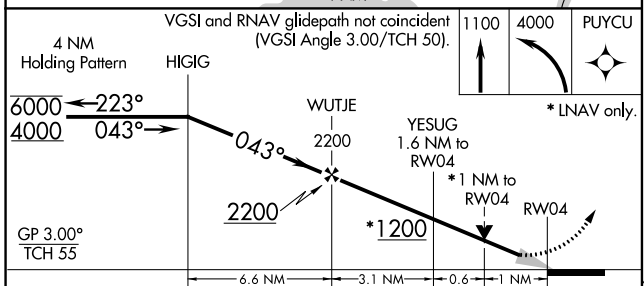
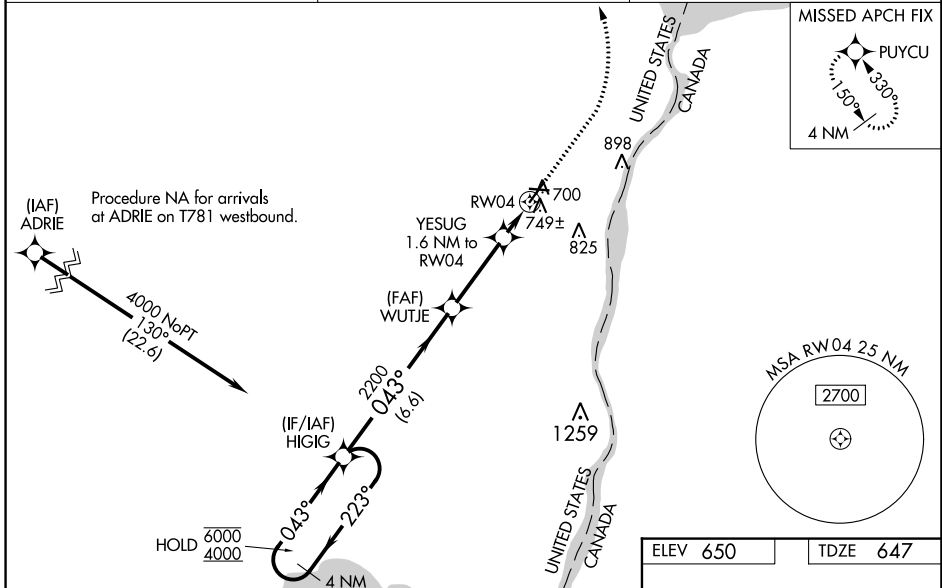


MISSED APPROACH:  
Climb to 1100 then climbing left turn to 4000 direct PUYCU and hold, continue climb-in-hold to 4000.

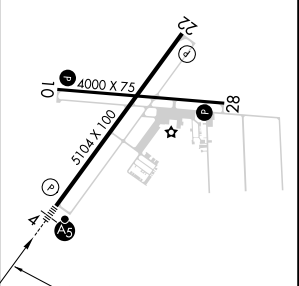
AWOS-3  
**118.375**

SELFRIDGE APP CON \*  
**119.6 391.9**

UNICOM  
**123.05 (CTAF)**



ELEV 650	TDZE 647
----------	----------



CATEGORY	A	B	C	D
LPV DA	847-½		200 (200-½)	
LNAV/VNAV DA	930-½		283 (300-½)	
LNAV MDA	1000-½ 353 (400-½)		1000-5/8 353 (400-5/8)	
<b>C</b> CIRCLING	1160-1 510 (600-1)		1260-1¾ 610 (700-1¾) 1260-2 610 (700-2)	

HIRL Rwy 4-22 **1**

MIRL Rwy 10-28 **1**

REIL Rws 10, 22, and 28 **1**

EC-1, 11 JUL 2024 to 08 AUG 2024

EC-1, 11 JUL 2024 to 08 AUG 2024