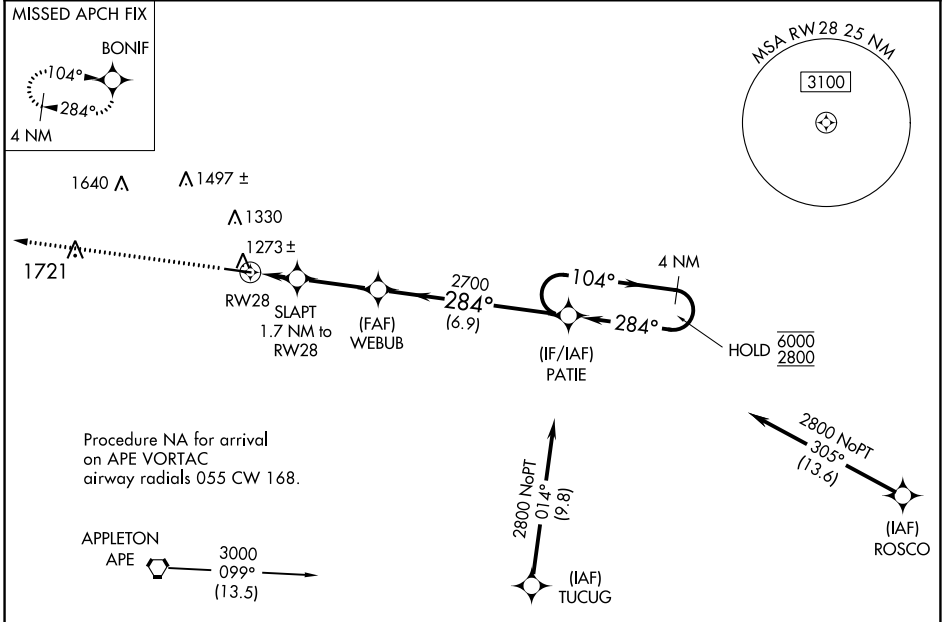


WAAS CH <b>69423</b> <b>W28A</b>	APP CRS <b>284°</b>	Rwy Idg TDZE Apt Elev	<b>5504</b> <b>1189</b> <b>1191</b>
--	------------------------	-----------------------------	---

# RNAV (GPS) RWY 28

KNOX COUNTY (4I3)

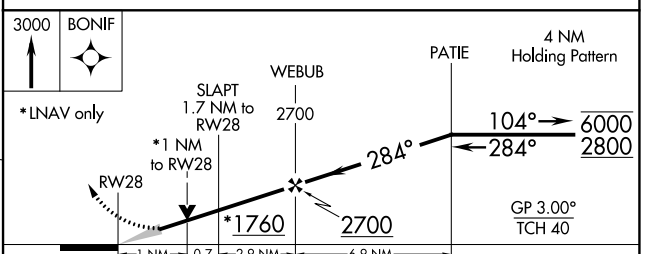
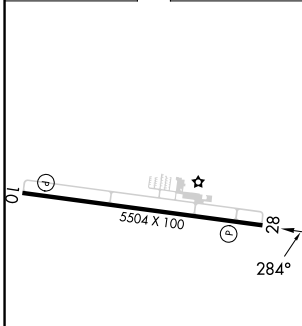
RNP APCH. ▼ For uncompensated Baro-VNAV systems, LNAV/VNAV NA below -17°C or above 36°C.		MISSED APPROACH: Climb to 3000 direct BONIF and hold.	
AWOS-3 <b>126.05</b>	COLUMBUS APP CON <b>125.95 317.775</b>	CLNC DEL <b>119.45</b>	UNICOM <b>123.05</b> (CTAF) <b>0</b>



EC-2, 11 JUL 2024 to 08 AUG 2024

EC-2, 11 JUL 2024 to 08 AUG 2024

ELEV 1191	TDZE 1189
-----------	-----------



CATEGORY	A	B	C	D
LPV DA		1389-1	200 (200-1)	
LNAV/VNAV DA		1439-1	250 (300-1)	
LNAV MDA		1540-1	351 (400-1)	