

WAAS CH 87107 W02A	APP CRS 018°	Rwy Idg TDZE Apt Elev	4028 933 934
----------------------------------------	------------------------	-----------------------------	-----------------------------------------

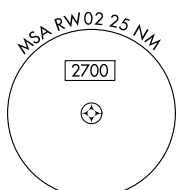
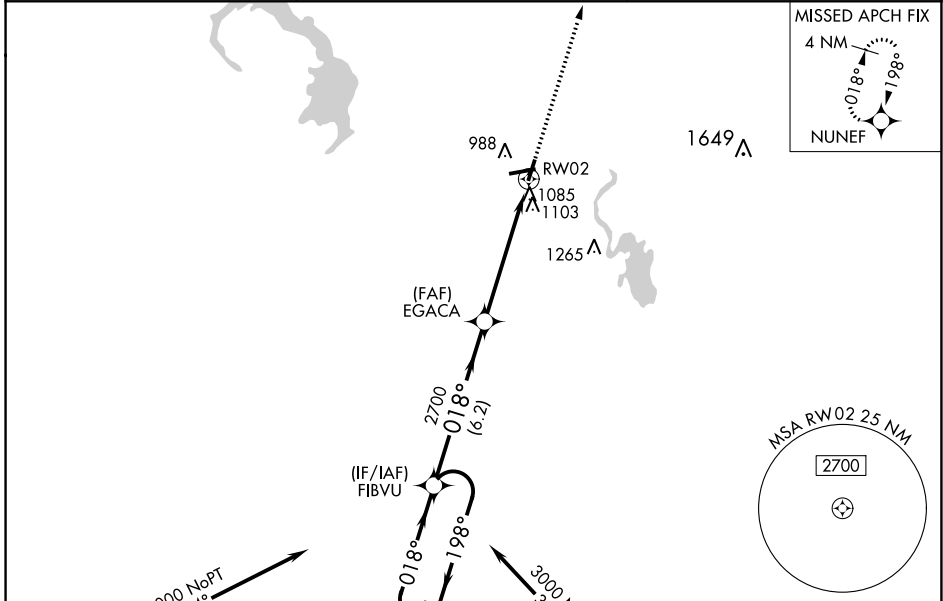
RNAV (GPS) RWY 2

DODGE COUNTY (UNU)

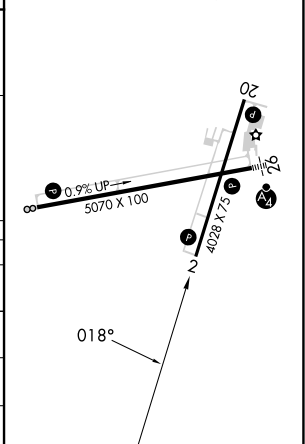
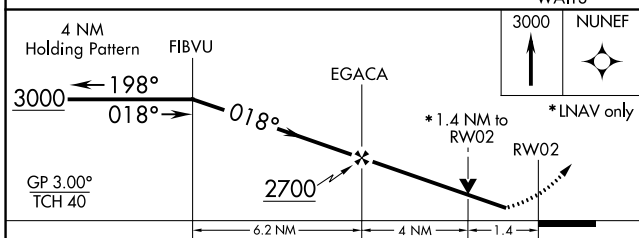
⚠ For uncompensated Baro-VNAV systems, LNAV/VNAV NA below -16° C (4° F) or above 54° C (130° F). DME/DME RNP-0.3 NA. When local altimeter setting not received, use Dane County Rgnl-Truax fld altimeter setting and increase all DA/MDA 100 feet, increase all visibilities ½ mile. VDP and Baro-VNAV NA when using Dane County Rgnl-Truax fld altimeter setting. Visibility reduction by helicopters NA.

MISSED APPROACH:
Climb to 3000 direct NUNEF and hold.

AWOS-3 120.825	MADISON APP CON * 119.15 343.7	UNICOM 122.7 (CTAF)
--------------------------	------------------------------------------	-------------------------------



ELEV 934	TDZE 933
REIL Rwy 2, 8, and 20	
MIRL Rwy 8-26 and 2-20	



CATEGORY	A	B	C	D
LPV DA	1189-1 256 (300-1)			NA
LNAV/VNAV DA	1432-1¾ 499 (500-1¾)			NA
LNAV MDA	1400-1 467 (500-1)		1400-1¼ 467 (500-1¼)	NA
C CIRCLING	1440-1 506 (600-1)		1440-1½ 506 (600-1½)	NA

EC-3, 11 JUL 2024 to 08 AUG 2024

EC-3, 11 JUL 2024 to 08 AUG 2024