

APP CRS	Rwy Idg	5070
261°	TDZE	934
	Apt Elev	934

RNAV (GPS) RWY 26

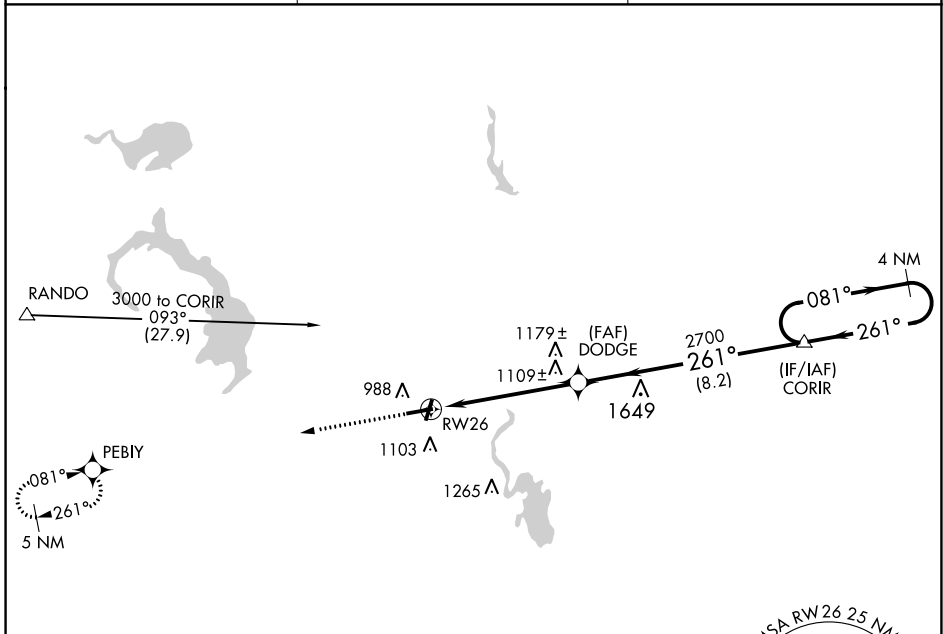
DODGE COUNTY (UNU)

⚠ When local altimeter setting not received, use Dane County Rgnl-Truax Fld altimeter setting and increase all MDAs 100 feet, and increase Circling Cat C visibility ¼ SM. DME/DME RNP-0.3 NA. Visibility reduction by helicopters NA. Inoperative table does not apply.

MALSF

MISSED APPROACH: Climb to 3000 direct PEBIY and hold.

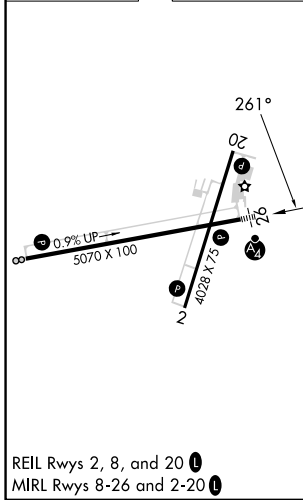
AWOS-3 120.825	MADISON APP CON * 119.15 343.7	UNICOM 122.7 (CTAF) 1
--------------------------	--	---------------------------------



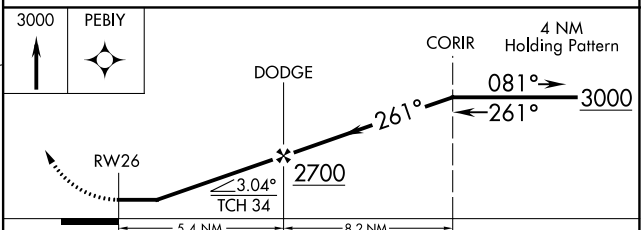
EC-3, 11 JUL 2024 to 08 AUG 2024

EC-3, 11 JUL 2024 to 08 AUG 2024

ELEV 934	TDZE 934
----------	----------



REIL Rwy 2, 8, and 20
 MIRL Rwy 8-26 and 2-20



CATEGORY	A	B	C	D
LNAV MDA	1360-1	426 (500-1)	1360-1¼ 426 (500-1¼)	NA
C CIRCLING	1440-1	506 (600-1)	1440-1½ 506 (600-1½)	NA