

|  |                        |                             |   |
|--|------------------------|-----------------------------|---|
| WAAS<br>CH <b>90409</b><br><b>W12A</b> | APP CRS<br><b>120°</b> | Rwy Idg<br>TDZE<br>Apt Elev | <b>5000</b><br><b>1274</b><br><b>1274</b> |
|--|------------------------|-----------------------------|---|

# RNAV (GPS) RWY 12

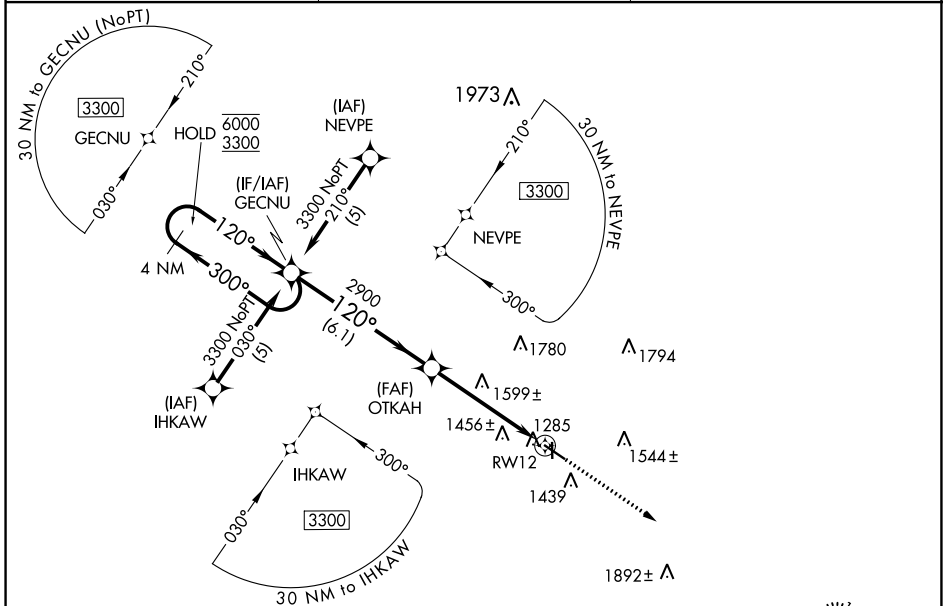
DENISON MUNI (DNS)

RNP APCH-GPS.

**⚠** Circling NA to Rwys 18 and 36. For uncompensated Baro-VNAV systems, LNAV/VNAV NA below -17°C or above 54°C. Baro-VNAV and VDP NA when using Carroll altimeter setting.  
**⚠** When local altimeter setting not received, use Carroll altimeter setting; increase LPV DA 1596 feet, LNAV/VNAV DA to 1626 feet; increase all MDAs 80 feet and visibility LNAV Cat C 1/8 SM and Circling Cat C 1/4 SM.

MISSED APPROACH:  
Climb to 3900 direct  
OTLAZ and hold.

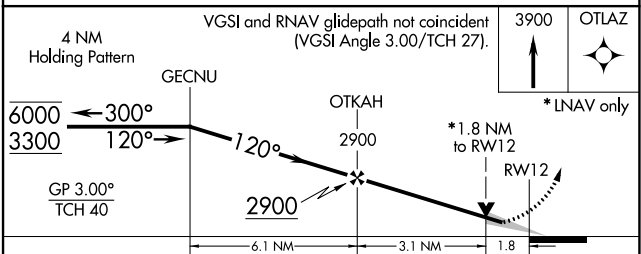
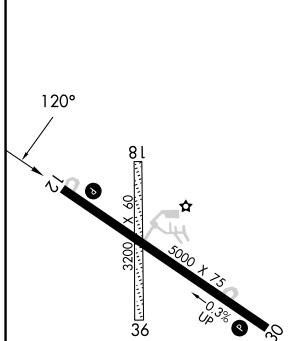
|                         |  |                                 |
|-------------------------|--|---------------------------------|
| AWOS-3<br><b>119.95</b> | MINNEAPOLIS CENTER<br><b>119.6 290.4</b> | UNICOM<br><b>122.8 (CTAF) 0</b> |
|-------------------------|--|---------------------------------|



NC-3, 11 JUL 2024 to 08 AUG 2024

NC-3, 11 JUL 2024 to 08 AUG 2024

|           |           |
|-----------|-----------|
| ELEV 1274 | TDZE 1274 |
|-----------|-----------|



| CATEGORY     | A                     | B                     | C                             | D  |
|--------------|-----------------------|-----------------------|-------------------------------|----|
| LPV DA       |                       | 1524-1 250 (300-1)    |                               | NA |
| LNAV/VNAV DA |                       | 1554-1 280 (300-1)    |                               | NA |
| LNAV MDA     | 1860-1                | 586 (600-1)           | 1860-1 3/4<br>586 (600-1 3/4) | NA |
| CIRCLING     | 1860-1<br>586 (600-1) | 1880-1<br>606 (700-1) | 2100-2 1/2<br>826 (900-2 1/2) | NA |

DENISON, IOWA  
Amdt 1C 15JUL21

41°59'N-95°23'W

# DENISON MUNI (DNS) RNAV (GPS) RWY 12