

| | | | |
|--|------------------------|-----------------------------|---|
| WAAS CH 45908 W30A | APP CRS 300° | Rwy Idg TDZE Apt Elev | 5000 1266 1274 |
|--|------------------------|-----------------------------|---|

RNAV (GPS) RWY 30

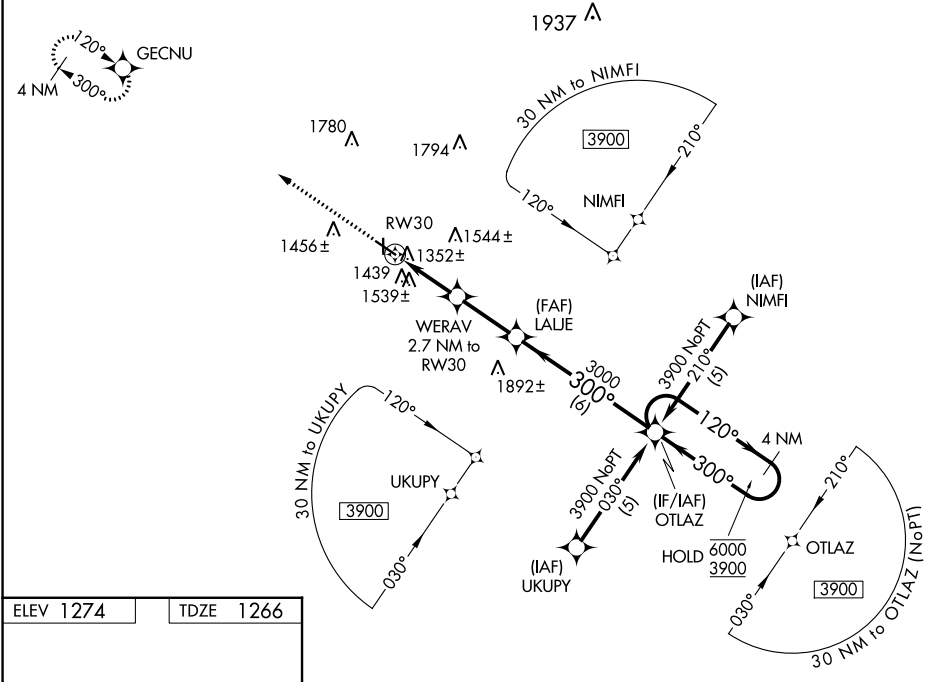
DENISON MUNI (DNS)

RNP APCH-GPS.

⚠ Circling NA to Rwys 18 and 36. Rwy 30 helicopter visibility reduction below ¼ SM NA. Baro-VNAV and VDP NA when using Carroll altimeter setting. When local altimeter setting not received, use Carroll altimeter setting; increase LPV DA to 1623 feet, increase LNAV/VNAV DA to 1925 feet and all visibilities ½ SM, increase all MDA 80 feet; increase LNAV and Circling visibility Cat C ¼ SM. For uncompensated Baro-VNAV systems, LNAV/VNAV NA below - 17°C or above 54°C.

MISSED APPROACH:
Climb to 3300 direct
GECNU and hold.

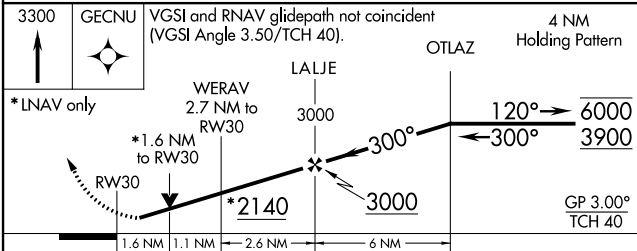
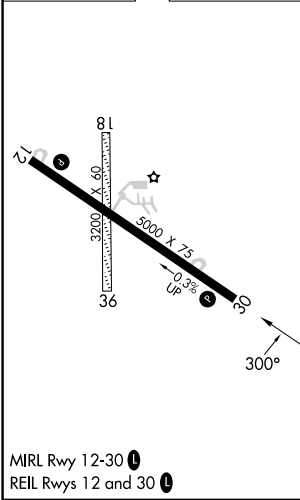
| | | |
|-------------------------|--|-------------------------------|
| AWOS-3 119.95 | MINNEAPOLIS CENTER 119.6 290.4 | UNICOM 122.8 (CTAF) |
|-------------------------|--|-------------------------------|



NC-3, 11 JUL 2024 to 08 AUG 2024

NC-3, 11 JUL 2024 to 08 AUG 2024

| | |
|-----------|-----------|
| ELEV 1274 | TDZE 1266 |
|-----------|-----------|



| CATEGORY | A | B | C | D |
|--------------|-----------------------|-----------------------|-------------------------|----|
| LPV DA | 1551-1 | 285 (300-1) | | NA |
| LNAV/VNAV DA | 1853-1¾ | 587 (600-1¾) | | NA |
| LNAV MDA | 1800-1 | 534 (600-1) | 1800-1½ 534 (600-1½) | NA |
| CIRCLING | 1840-1 566 (600-1) | 1880-1 606 (700-1) | 2100-2½ 826 (900-2½) | NA |