

WAAS CH 40234 W17A	APP CRS 175°	Rwy Idg TDZE Apt Elev	3704 27 28
--	------------------------	-----------------------------	---------------------------------------

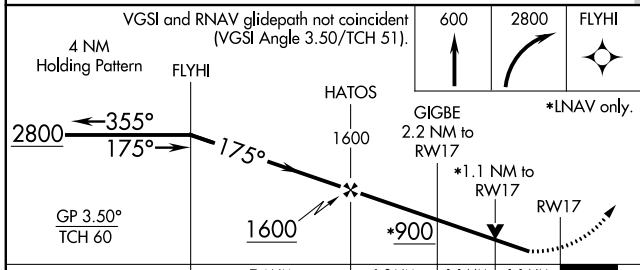
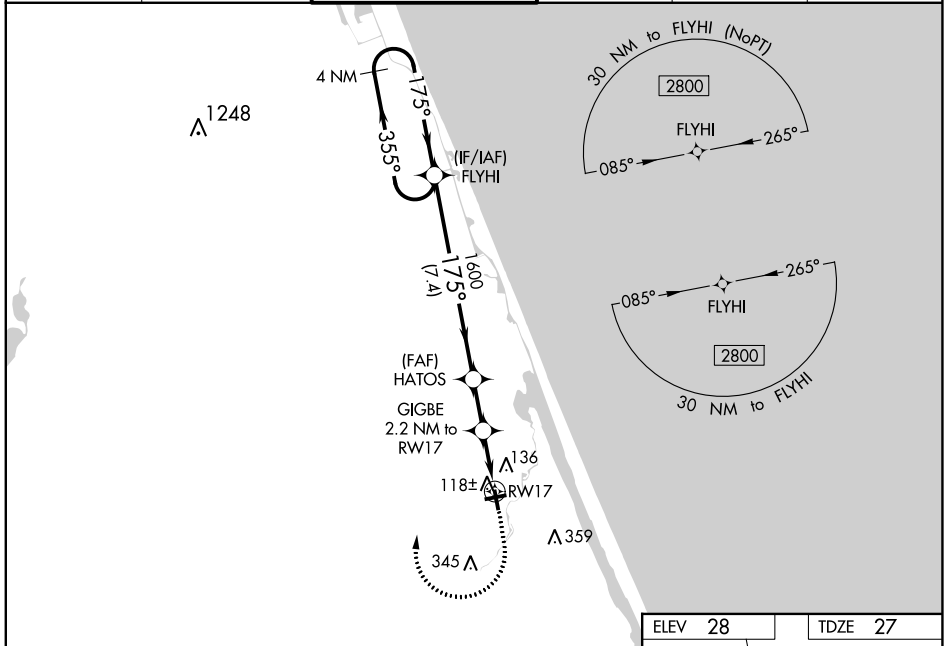
RNAV (GPS) RWY 17

ORMOND BEACH MUNI (OMN)

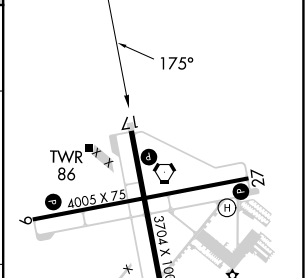
⚠ Baro-VNAV NA when using Daytona Beach altimeter setting. For uncompensated Baro-VNAV systems, LNAV/VNAV NA below -1.5°C (5°F) or above 54°C (130°F). DME/DME RNP-0.3 NA. Helicopter visibility reduction below 3/4 SM NA. When local altimeter setting not received, use Daytona Beach altimeter setting and increase all DA 19 feet and all MDA 20 feet; increase VNAV Cat C visibility 1/8 mile. VDP NA when using Daytona Beach altimeter setting.

MISSED APPROACH: Climb to 600 then climbing right turn to 2800 direct FLYHI and hold.

ATIS 118.475	DAYTONA APP CON 125.8 269.075	ORMOND BEACH TOWER* 119.075 (CTAF)	GND CON 121.625	CLNC DEL 121.625	UNICOM 123.05
------------------------	---	--	---------------------------	----------------------------	-------------------------



ELEV 28	TDZE 27
---------	---------



CATEGORY	A	B	C	D
LPV DA	302-1	275 (300-1)		NA
LNAV/VNAV DA	288-1	261 (300-1)		NA
LNAV MDA	400-1	373 (400-1)		NA
C CIRCLING	500-1	471 (500-1)	740-2 711 (800-2)	NA

REIL Rwy 9, 17, 27, and 35 **Ⓛ**
MRL Rwy 9-27 and 17-35 **Ⓛ**

SE-3, 11 JUL 2024 to 08 AUG 2024

SE-3, 11 JUL 2024 to 08 AUG 2024