

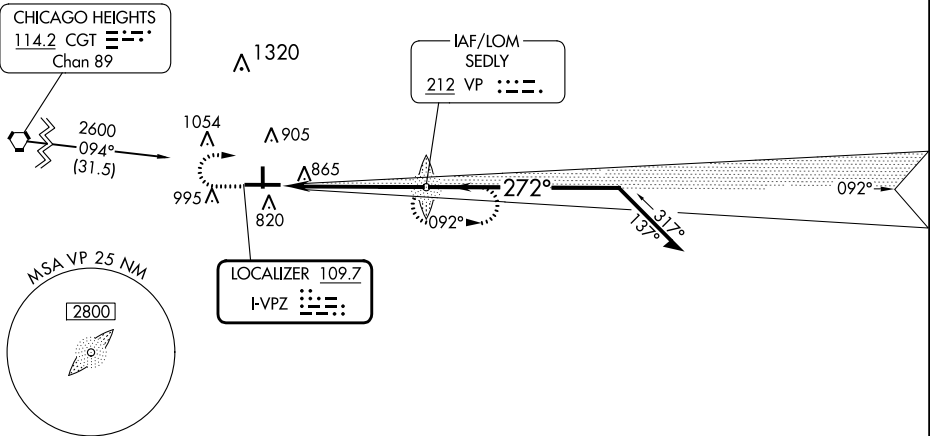
LOC I-VPZ <b>109.7</b>	APP CRS <b>272°</b>	Rwy Idg TDZE Apt Elev	<b>6500</b> <b>770</b> <b>770</b>
---------------------------	------------------------	-----------------------------	---

**ILS or LOC RWY 27**  
PORTER COUNTY RGNL (VPZ)

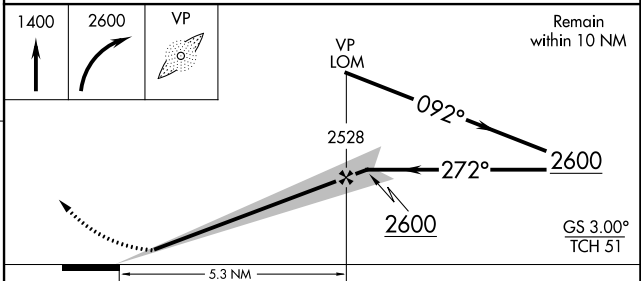
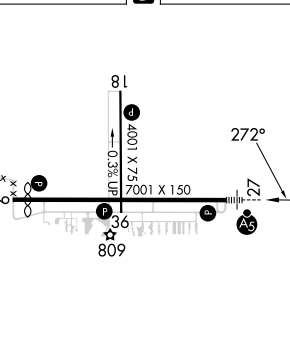
ADF required. ▼ For inop ALS, increase S-LOC 27 Cats C and D visibility to 1 SM.	MALSR AS	MISSED APPROACH: Climb to 1400, then climbing right turn to 2600 direct SEDLY LOM and hold, continue climb-in-hold to 2600.
---	-------------	---

ASOS <b>125.875</b>	SOUTH BEND APP CON * <b>132.05 257.8</b>	CLNC DEL <b>120.525</b>	UNICOM <b>122.725 (CTAF)</b>
------------------------	---	----------------------------	---------------------------------

Procedure NA for arrivals at CGT VORTAC on V8-92 westbound.



ELEV 770	D	TDZE 770
----------	---	----------



HIRL Rwy 9-27	MIRL Rwy 18-36	REIL Rwys 9, 18 and 36			
FAF to MAP 5.3 NM					
Knots	60	90	120	150	180
Min:Sec	5:18	3:32	2:39	2:07	1:46

CATEGORY	A	B	C	D
S-ILS 27	970-1/2 200 (200-1/2)			
S-LOC 27	1120-1/2 350 (400-1/2)		1120-5/8 350 (400-5/8)	
CIRCLING	1260-1 490 (500-1)	1300-1 530 (600-1)	1360-1 1/2 590 (600-1 1/2)	1620-2 3/4 850 (900-2 3/4)

EC-2, 11 JUL 2024 to 08 AUG 2024

EC-2, 11 JUL 2024 to 08 AUG 2024