

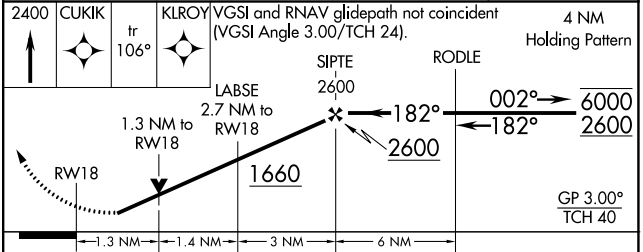
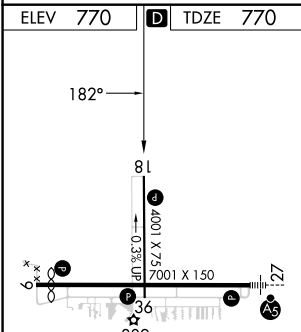
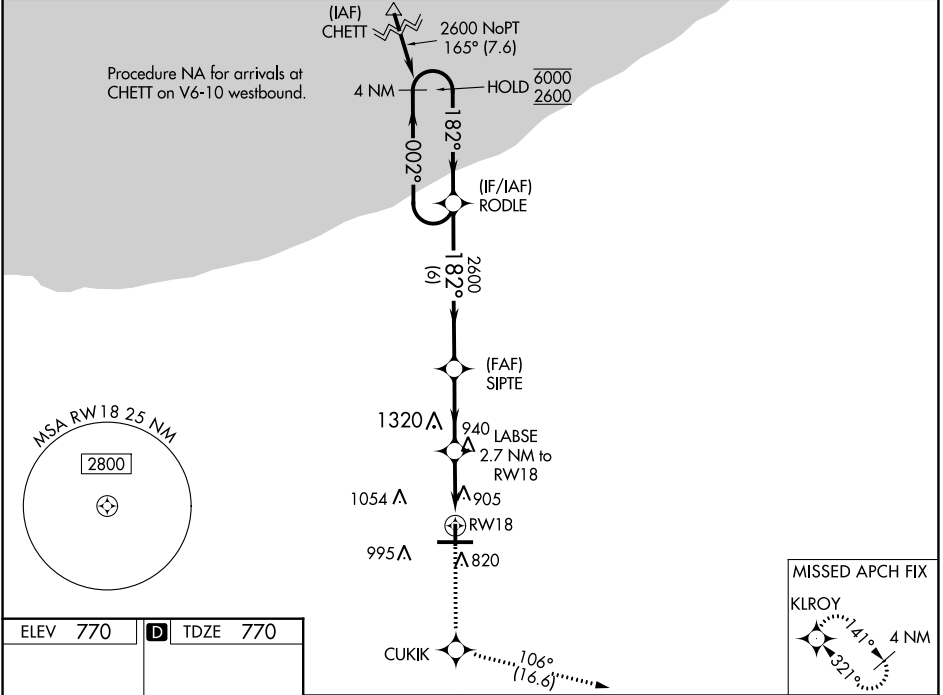
WAAS CH 82406 W18A	APP CRS 182°	Rwy Idg TDZE Apt Elev	4001 770 770
--	------------------------	-----------------------------	---

RNAV (GPS) RWY 18

PORTER COUNTY RGNL (VPZ)

RNP APCH-GPS.			MISSED APPROACH: Climb to 2400 direct CUKIK and on track 106° to KLROY and hold.
▼ ▲	Rwy 18 helicopter visibility reduction below ¼ SM NA. For uncompensated Baro-VNAV systems, LNAV/VNAV NA below -21°C or above 54°C.		

ASOS 125.875	SOUTH BEND APP CON * 132.05 257.8	CLNC DEL 120.525	UNICOM 122.725 (CTAF) 0
------------------------	---	----------------------------	-----------------------------------



CATEGORY	A	B	C	D
LPV DA	1059-7/8	289 (300-7/8)		NA
LNAV/VNAV DA	1200-1¼	430 (500-1¼)		NA
LNAV MDA	1200-1	430 (500-1)		NA
CIRCLING	1260-1 490 (500-1)	1300-1 530 (600-1)		NA

HIRL Rwy 9-27
MIRL Rwy 18-36
REIL Rwys 9, 18 and 36

EC-2, 11 JUL 2024 to 08 AUG 2024

EC-2, 11 JUL 2024 to 08 AUG 2024