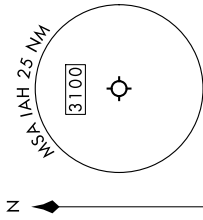


TOP ALTITUDE:
16000



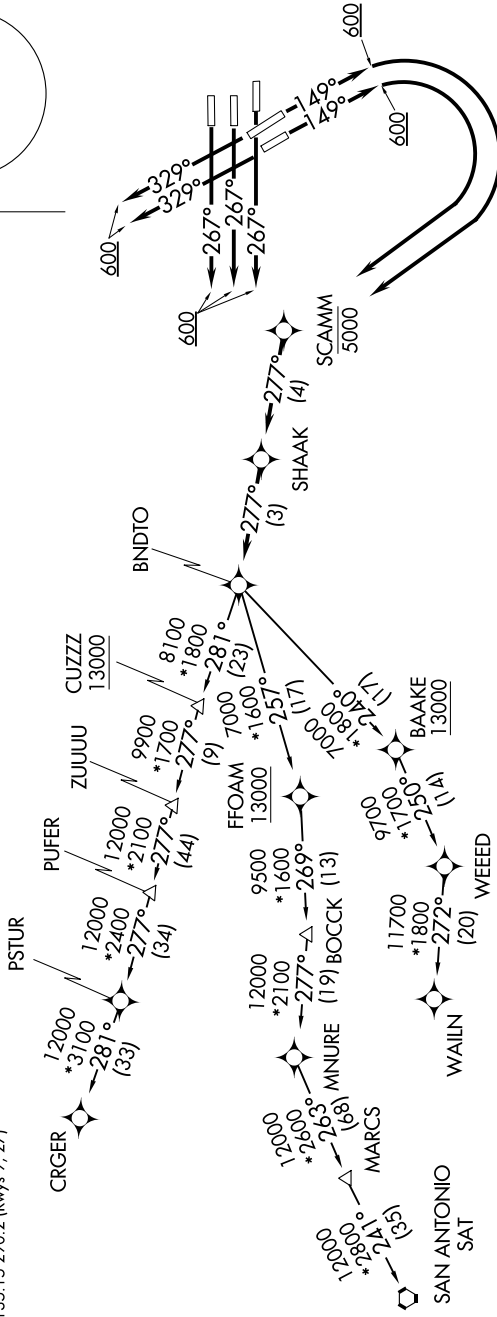
RNAV 1 - DME/DME/IRU or GPS required.
 RADAR required.
 RADAR required for non - GPS equipped aircraft.

TAKEOFF MINIMUMS

Rwys 15L/R, 26L/R, 27, 33L/R: Standard with
 minimum climb of 500'/NM to 1200.

NOTE: For use during west flow at IAH, for east flow
 file the PITZZ DEPARTURE.

- HOUSTON DEP CON 126.675 339.8
- D-ATIS 124.05
- CINC DEL 128.1
- CPDLC 128.1
- GND CON 118.575 (Rwys 8L/R, 26L/R, 9, 27)
- 121.7 (Rwys 15L/R, 33L/R)
- HOUSTON TOWER 120.725 290.2 (Rwys 8L, 26R)
- 125.35 290.2 (Rwys 6R, 26L)
- 127.3 288.25 (Rwys 15L/R, 33L/R)
- 135.15 290.2 (Rwys 9, 27)



NOTE: Chart not to scale.

(CONTINUED ON FOLLOWING PAGE)