

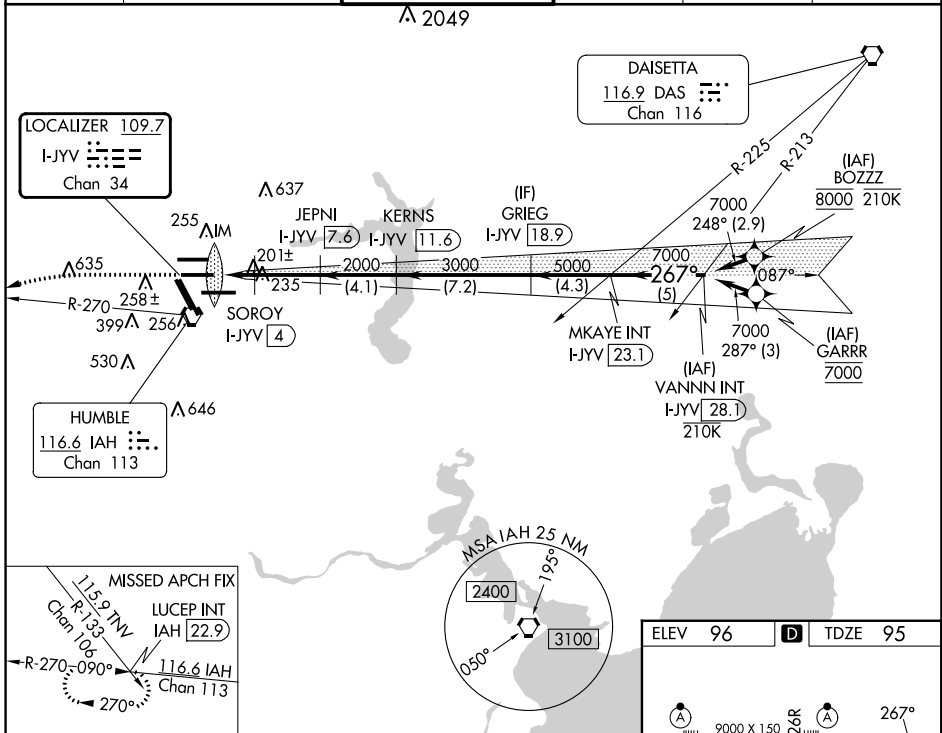
LOC/DME I-JYV 109.7 Chan 34	APP CRS 267°	Rwy Idg 9402 TDZE 95 Apt Elev 96
---	------------------------	---

ILS or LOC RWY 26L

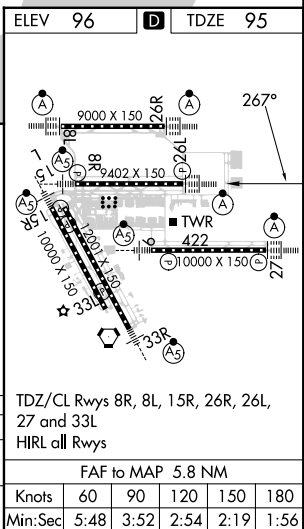
GEORGE BUSH INTCNL/HOUSTON (IAH)

DME required. From BOZZZ, GARRR: RNAV 1-GPS required.		ALSF-2 	MISSED APPROACH: Climb to 3000 then left turn heading 240° and IAH VORTAC R-270 to LUCEP INT/IAH 22.9 DME and hold.
Simultaneous approach authorized with Rwy 26R and Rwy 27. For inop ALS, increase S-ILS 26L Cat E visibility to RVR 4000, S-LOC 26L Cat C/D/E visibility to RVR 5000.			

D-ATIS 124.05	HOUSTON APP CON 120.05 379.1 EAST 124.35 316.15 WEST	HOUSTON TOWER 125.35 290.2	GND CON 118.575	CLNC DEL 128.1	CPDLC
-------------------------	--	--------------------------------------	---------------------------	--------------------------	-------



3000	hdg 240°	IAH R-270	LUCEP INT	VGSi and ILS glidepath not coincident (VGSi Angle 3.00/TCH 71).				
*LOC only								
I-JYV (1.7)	*I-JYV (2.7)	SOROIY I-JYV (4)	JEPNI I-JYV (7.6)	KERNS I-JYV (11.6)	GRIEG I-JYV (18.9)	MKAYE INT I-JYV (23.1)	VANNN INT I-JYV (28.1)	7000
IM		*880		2000	3000	5000	7000	GS 3.00° TCH 56
0.1		0.8 NM	1.4 NM	3.5 NM	4.1 NM	7.2 NM	4.3 NM	5 NM
CATEGORY	A		B		C		D	
S-ILS 26L	295/18		200 (200-½)					
S-LOC 26L	460/24	365 (400-½)		460/35		365 (400-¾)		



SC-5, 11 JUL 2024 to 08 AUG 2024

SC-5, 11 JUL 2024 to 08 AUG 2024