

LOC/DME I-GHI 110.9 Chan 46	APP CRS 267°	Rwy Idg 10000 TDZE 86 Apt Elev 96
---	------------------------	--

ILS or LOC RWY 27

GEORGE BUSH INTCNL/HOUSTON (IAH)

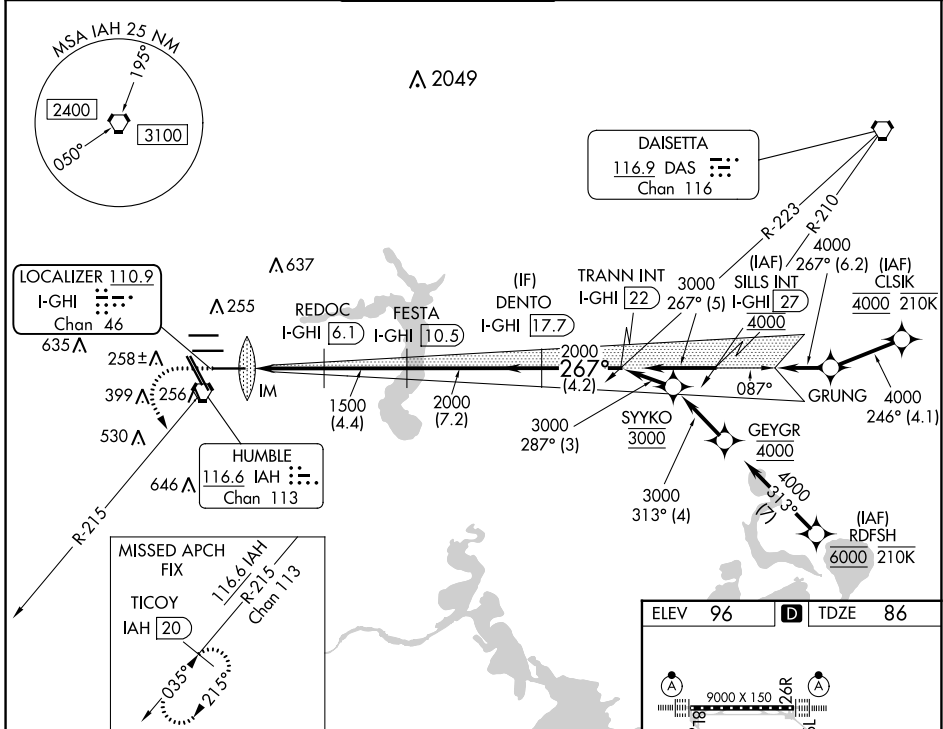
RNAV 1-GPS or RADAR required for procedure entry.
DME required.

Simultaneous approach authorized. Use of FD or AP required during simultaneous operations. For inop ALS, increase S-ILS 27 Cat E visibility to RVR 4000 and S-LOC 27 Cat C-E visibility to 1 1/8 SM.

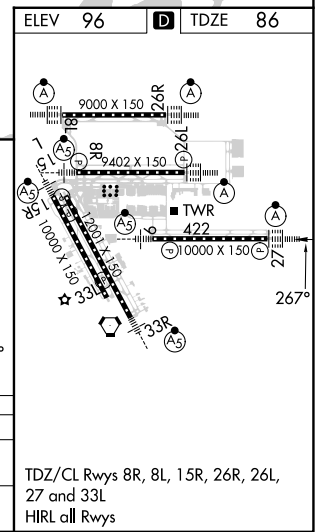
ALSF-2

MISSED APPROACH: Climb to 560 then climbing left turn to 3000 on IAH VORTAC R-215 to TICCOY/IAH 20 DME and hold.

D-ATIS 124.05	HOUSTON APP CON 120.05 379.1 EAST 124.35 316.15 WEST	HOUSTON TOWER 135.15 290.2	GND CON 118.575	CLNC DEL 128.1	CPDLC
-------------------------	--	--------------------------------------	---------------------------	--------------------------	-------



560	3000	TICCOY IAH 20	VGSi and ILS glidepath not coincident (VGSi Angle 3.00/TCH 70).			TRANN INT I-GHI 22
I-GHI 1.8	I-GHI 3.1	I-GHI 6.1	I-GHI 10.5	I-GHI 17.7	3000	GS 3.00° TCH 55
0.1	1.2	3 NM	4.4 NM	7.2 NM	4.2 NM	
CATEGORY	A	B	C	D	E	
S-ILS 27	286/18 200 (200-1/2)					
S-LOC 27	560/24	474 (500-1/2)	560/50 474 (500-1)			



SC-5, 11 JUL 2024 to 08 AUG 2024

SC-5, 11 JUL 2024 to 08 AUG 2024