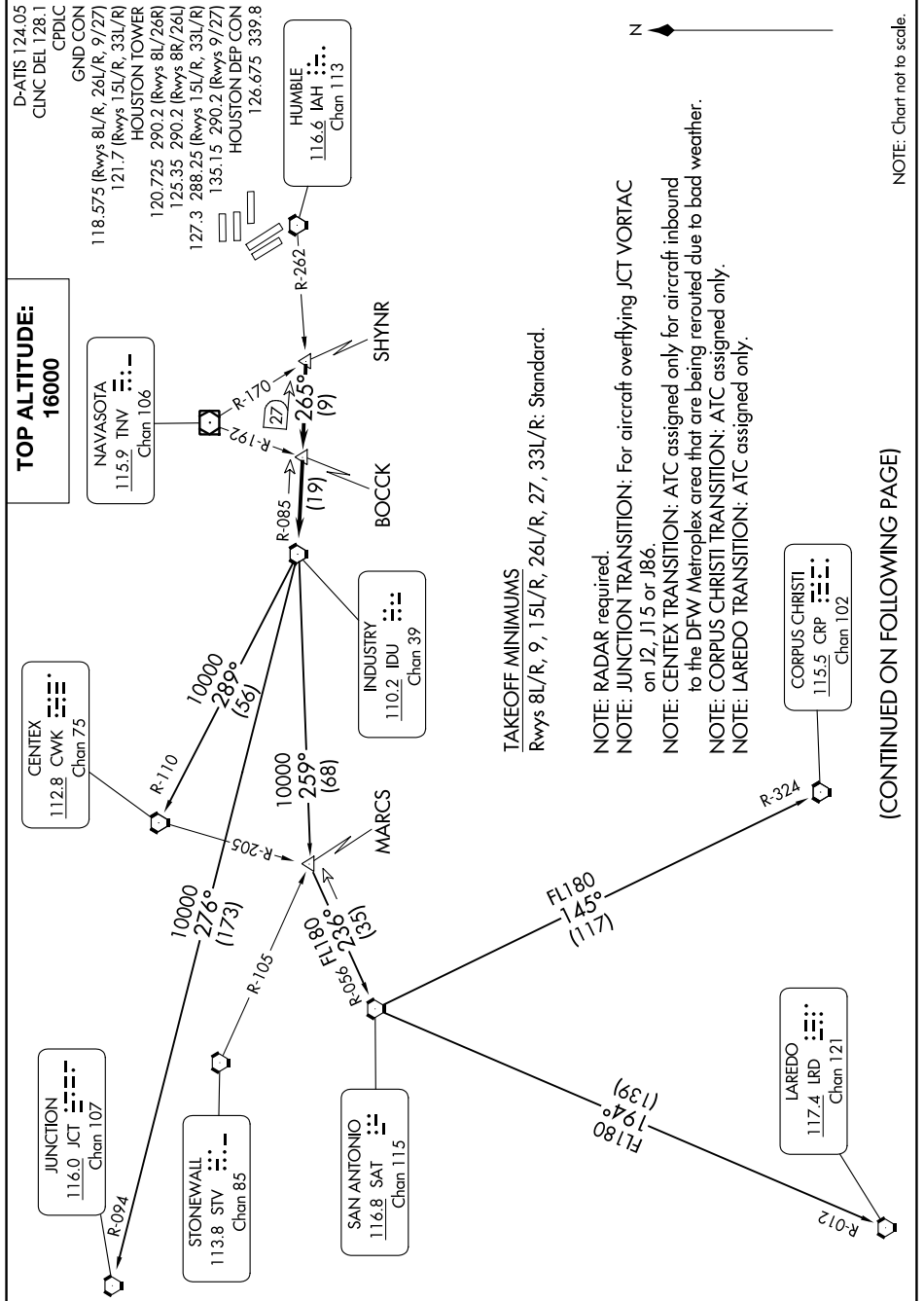


INDUSTRY ONE DEPARTURE

SC-5, 11 JUL 2024 to 08 AUG 2024



TAKEOFF MINIMUMS
Rwys 8L/R, 9, 15L/R, 26L/R, 27, 33L/R: Standard.

NOTE: RADAR required.
 NOTE: JUNCTION TRANSITION: For aircraft overflying JCT VORTAC on J2, J15 or J86.
 NOTE: CENTEX TRANSITION: ATC assigned only for aircraft inbound to the DFW Metroplex area that are being rerouted due to bad weather.
 NOTE: CORPUS CHRISTI TRANSITION: ATC assigned only.
 NOTE: LAREDO TRANSITION: ATC assigned only.

(CONTINUED ON FOLLOWING PAGE)

NOTE: Chart not to scale.

SC-5, 11 JUL 2024 to 08 AUG 2024

INDUSTRY ONE DEPARTURE